

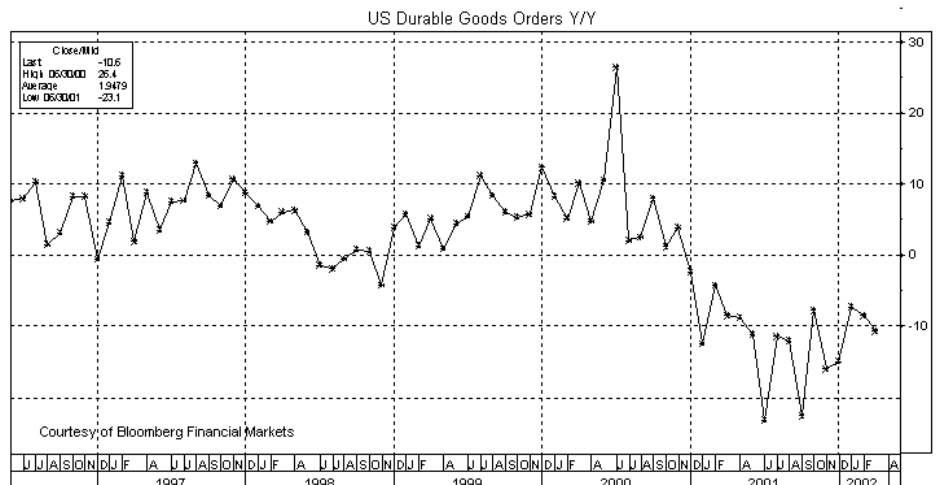
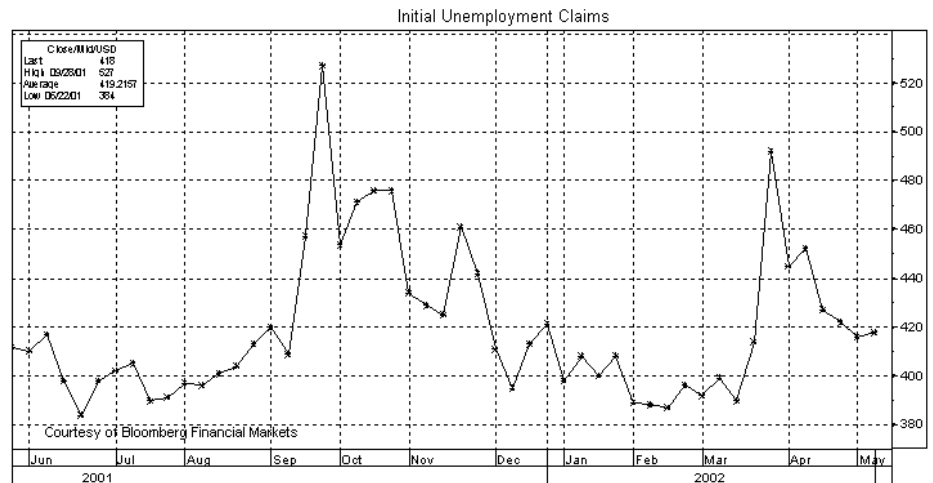
**Thursday 5/23/02 -- Americas**

**Comment** -- The US markets will focus on (1) this morning's US durable goods and unemployment claims reports, (2) any developments on the US government's terrorist warnings, (3) the tense situation in the Middle East and between India and Pakistan, (4) the dollar which continued to show weakness yesterday despite a round of BOJ intervention, (5) the stock market which recovered mildly yesterday, (6) the US credit market which continued to rally yesterday, and (7) gold prices which posted another new 2-year high yesterday.

**Durable goods orders expected to show modest +0.5% gain** -- Today's April durable goods orders report is expected to show a gain of +0.5% m/m, reversing March's -0.5% decline. March durable goods orders were down -10.6% on a year-on-year basis but should start to improve significantly on a year-on-year basis in coming months due to the weak year-earlier base. On a year-on-year basis, the series hit a cyclical low of -22.6% back in September. Durable goods orders are expected to firm up in coming months as businesses are forced to replenish low inventories and as demand is confirmed. April retail sales soared by +1.2% which depressed inventory levels. Excluding transportation orders, which are expected to be weak, April goods orders are expected to rise +1.0% after March's -0.1% decline.

**Claims are expected to move lower** -- Unemployment claims in the week ended 18 are expected to fall -8,000 to 410,000. Claims in the past 2 weeks have remained around the 420,000 area versus the 390,000 area seen before the mid-March surge to 492,000 tied to the extension of unemployment benefits. The slow decline in claims in the past several weeks is evidence of continued softness in the US labor market.

**Gold edges to another new 2-year high** -- Cash gold yesterday rallied to another new 2-year high of \$319.65. Gold has rallied by about \$12 in the past week and by more than \$50 in the past



year. June gold futures yesterday closed -\$2.80 at \$318.90. Gold rallied yesterday on continued strong technicals, the ongoing tensions related to terrorism and to the Middle East and Indian subcontinent, and yesterday's continued weakness in the dollar.

**Crude oil continues lower from last week's 8-month high** -- July crude oil prices yesterday fell -13 cents to \$26.30 and posted a new 2-week low of \$26.15. The market is now down \$2 from last Tuesday's 8-month high of \$29.45 on the weekly nearest futures chart. That sell-off was mainly due to Russia's rejection of the export restrictions it had agreed to as part of a deal with OPEC. The market slid yesterday on the late-Tuesday API report

which showed a 5.6 million barrel rise (+1.8%) in US oil inventories, the first rise in 3 weeks. Gasoline inventories fell 0.5% and distillate fuel inventories fell 0.1%. Refiners were running at 91.4% of capacity, down 1.1 percentage points from the previous week.

**US Interest Rates -- US credit market continues higher** -- **Futures closes:** USM02 +0-18 at 101-26; TYM02 +0-120 at 106-000; FVM02 +0-090 at 106-225; TUM02 +0-037 at 104-247; EDZ02 +.0550 at 97.0400. Cash closes (3PM NY): cash 30-yr +0-15 at 96-13; cash 30-yr yield -.034 at 5.629; cash 10-yr +0-11 at 98-09; cash 10-yr yield -.045 at 5.102; cash 5-yr +0-08 at 99-26; cash 5-yr yield -.057 at 4.418; cash 2-yr +0-170 at

002-200; cash 2-yr yield -.059 at 3.165; 3-mo T-bill -.020 at 1.690.

June T-bonds yesterday posted a 1-1/2 week high and are now in the upper half of the range established by the early-May sell-off from the 2-1/2 month high of 103-04 (May 1) and last Tuesday's 1-month low of 99-27. Dec Euros yesterday posted a new 2-week high of 97.090 and stopped just 1 bp shy of the early-May 6-1/2 month high of 97.100.

**Bullish factors** included (1) early weakness in US stocks, (2) continued nervousness about the spate of terrorist warnings by US officials and about whether there may be an attack over the Memorial Day weekend, (3) additional flight-to-quality support from another suicide bombing in Israel (which increases the chances for another Israeli incursion into the Palestinian territories) and from the high tensions between India and Pakistan who continue shell each other across the Line of Control in Kashmir, (4) another coupon pass yesterday which soaked up more secondary supply, and (5) lower crude oil prices.

**Bearish factors** included (1) yesterday's upward rebound in stocks, (2) yesterday's new lows in the dollar which discourages foreign investment in US securities and contributes to US import inflation, (2) yesterday's continued rally in gold prices to a new 2-year high, and (3) the \$2 billion boost in the size of the 2-year T-note auction to \$27.0 billion.

The Treasury yesterday announced that next week's 2-year T-note auction will be \$27.0 billion, up from the \$25.0 billion size seen in the past 4 monthly auctions. That was on the higher end of expectations. The larger 2-year was made necessary by the Treasury's cut in this week's 4-week T-bill auction to \$18 billion (from \$25 billion) and by the Treasury's poor revenue situation.

**US Stock Market -- US Stock Index Settles:** Dow Industrials +52.17 at 10157.9; S&P 500 +6.14 at 1086.02; SPM2 +2.00 at 1085.10; NASDAQ Composite +9.26 at 1673.45; Russell 2000 -1.55 at 493.91. NYSE volume yesterday remained light at 1.14 billion, below the 3-month average of 1.31 bln shares. Market breadth was slightly bullish with 1,614 advancing shares versus 1,549 declining shares.

June S&Ps and the cash S&P index yesterday extended the 3-session downmove from last Friday's 1-month highs of 1109.10 and 1106.59,

respectively, to new 1-1/2 week lows but then recovered modestly. The indexes are still well above the recent 7-month lows of 1045.80 and 1048.96, respectively, posted in early May. The cash Nasdaq 100 yesterday remained well below last Wednesday's 1-month high of 1350.54. The Dow Industrials remained well below last Friday's 1-1/2 month high of 10,353.43.

**Bullish factors** included (1) some short-covering after the sharp sell-off seen early this week, (2) a rally in Johnson & Johnson (+\$1.36 to \$62.00) on a positive study on its drug-coated artery stent, (3) the continued rally in the US credit market with Dec Euros nearly posting a new 6-1/2 month high.

**Bearish factors** included (1) continued concern about the terrorist warnings and whether they will damage consumer and business confidence, (2) underlying concerns about weaker than expected US economic growth and lackluster earnings, and (3) yesterday's continued weakness in the dollar which deters foreign investors from investing in the US stock market.

**Forex -- Dollar closes (3PM NY):** Dollar closes (3PM NY): cash dollar index -.44 at 112.33; dlr/yen +.11 at 124.21; dlr/Swiss -.0082 at 1.5686; stlg/dlr -.0017 at 1.4582; USD/CAD -.0053 at 1.5332. Euro closes: euro/dlr +.0063 at .9263; euro/yen +.85 at 115.01; euro/Swiss +.0023 at 1.4532. Futures closes: DXM02 -.48 at 112.46; JYM02 -.0020 at .8062; ECM02 +.00620 at .92520; SFM02 +.0032 at .6377; BPM02 -.0008 at 1.4566; CDM02 +.0022 at .6518.

The **dlr/yen** yesterday posted another new 5-month low of 123.53 before recovering somewhat on the BOJ's intervention. The **euro/dlr** yesterday posted a new 7-month high of .9276, which was only about 1/2 cent below the 14-month high of .9331 posted last September.

Bearish factors for the dollar included (1) continued technical weakness with the new low in the dollar/yen and the new high in the euro/dollar, (2) continued capital flows into the yen as investors seek investment bargains if the Japanese economy is in fact bottoming, and (3) underlying concerns about weaker than expected US economic growth and the massive US current account deficit.

The dollar/yen yesterday closed just slightly higher despite BOJ intervention that was confirmed by Japanese Minister Shiokawa. The inability of the dollar/yen to

hold the initial gain on the intervention exposed the extent of the dollar/yen's underlying weakness and will only encourage more selling in coming days.

The BOJ's intervention yesterday was the first since last September. Yesterday's intervention was not surprising given the warnings by top Japanese officials early this week. The Japanese government is desperate to keep the yen's value down since it is relying on exports to be the engine to drive the Japanese economy out of recession. Mr. Shiokawa yesterday said that Japan sold yen because the yen's rise was "too rapid" and "abnormal." He said that, "Such a rapid rise is troublesome to everyone." He also said that Japan doesn't plan to ask other nations to join in the yen intervention effort. The US would be unlikely to join the intervention in any event given the US Treasury's hands-off policy toward the currency markets. However, the Fed could sell yen for the BOJ's account if the BOJ wants to extend the intervention into the US trading session.

**European Comment -- Euro zone** -- German March construction orders rose sharply by +5.8% m/m for the third consecutive monthly rise. On a year-on-year basis, construction orders turned positive at +5.7% y/y for the first time in the current business cycle.

**UK** -- The Bank of England at its meeting earlier this month on May 8-9 voted unanimously 9-0 to leave interest rates unchanged, according to the minutes of the meeting released yesterday. The minutes said, "The prospects for the world economy now appeared to be a little less strong than had seemed likely a month ago.... The rapid recovery in the United States, associated in large part with the stock cycle, had faltered in the past month and it seemed probable that the pace of the recovery there would not moderate." The minutes suggest that the MPC is not close to raising interest rates and that a rate hike is not likely until July or August.

**European closes** -- Closes: June Bunds +.11 at 105.80, Dec Liffe Euribor +4 bp at 95.840, June gilts +.08 at 111.59, Dec short-sterling +7 bp at 94.880, Eurotop 100 -42 at 2666 (-1.53%).

**Asian Comment -- Japan** -- Optimism that Japan's economy may have bottomed grew yesterday after Japan's all-industry index, which is designed to track GDP, rose by +1.2% in March and by +0.6% for Q1 as a whole. The services index rose sharply by +1.2% m/m in March. The report supported expectations for a positive Japanese Q1 GDP report.

However, the agency that compiles the industry index, the Ministry of Economic, Trade and Industry (METI), said that, "It's too early for us to judge whether the tertiary industry activity has hit bottom."

The BOJ in its monthly report released yesterday joined the government in upgrading its assessment of the economy for the third straight month. The BOJ said that, "The pace of deterioration in Japan's economy has moderated.... Production is starting to pick up, reflecting the increase in exports and progress" in reducing inventories. However, the BOJ said that a recovery will be "modest" because of weak consumer spending and because business investment will continue "follow a down-trend for a while." The BOJ

did not go as far as the government in declaring that the recession is over.

Japan's Q1 GDP was up sharply by +2.2% q/q and 8.9% y/y, according to a survey of six research companies polled by the *Nihon Keizai* newspaper. The poll showed average expectations for a 7% y/y rise in exports and a 2% q/q rise in consumer spending. The government will release the Q1 GDP report on June 7.

**Japanese Markets** -- June SGX 10-year JGBs yesterday closed -.01 at 138.62, posting a new 3-week low and falling farther from last Thursday's 6-month high of 139.12. Bearish factors centered on the strong industry index report. However, JGBs were supported by the

BOJ's less optimistic view of the economy than the government and by today's very strong auction of \$10.4 billion in 10-year JGBs yesterday where the bid cover ratio was more than 10 to 1 versus the last auction's cover of 2.3 times. Dec SGX Euroyen yesterday closed +0.5 bp at 99.870, slightly below the contract high of 99.885.

The Nikkei index yesterday closed +161 at 11,962, edging to a new 2-month high of 11,963. That was only mildly below the 9-month high of 12,034 posted on March 11. Japanese stocks were boosted by the favorable industry index report which boosted banking, telecom and retail stocks. Stocks were also supported by the BOJ's intervention to curb the yen's strength which is hurting Japanese profits.

**OPTIMA FINANCIAL NEWS SCHEDULE**^ Thu 5/23/02

**A. Today's News** (ET & GMT release time shown)

Thu	US	0830 ET	1230	Initial unemployment claims for week ending May 18 expected 410,000 previous 418,000.
		0830 ET	1230	Apr durable goods orders expected +0.5%, Mar -0.5%, less transportation expected +1.0%, Mar -0.1%.
		0930 ET	1330	Dallas Fed president McTeer speaks on US economy in Plano, Texas.
		1000 ET	1400	Chicago Fed President Moscov speaks at Iron and Steel Institute meeting.
		n/a		Earnings expected today: Barnes & Noble, Ciena, Novell, Sun Microsystems, Williams-Sonoma, among others.
	GER	0200 ET	0600	German Q1 GDP expected +0.1% q/q and -0.3% y/y.
		n/a		German May CPI North Rhine-Westphalia, Apr +0.1% m/m, +1.4% y/y.
				German May CPI Hesse, Brandenburg (May 23-24)
	UK	0430 ET	0830	UK Apr retail sales expected +0.4% m/m, Mar +0.1%, +5.2% y/y, Mar +5.6%.
				UK Apr car production, Mar 3-months/3-months +5.3%, 3-months/yr ago +12.3%.
				UK Q1 total business investment, Q4 -0.3% q/q, previous -7.4% y/y.
				UK CBI industrial trends survey.
				UK initial unemployment claims, for week ending May 18.
		1030 ET	1430	UK Apr coincident indicator index, Mar +0.1% m/m.
				UK Apr leading Indicator index, Mar +0.3% m/m.
	JPN	1950 ET	2350	Japan Mar average lending rate, Feb 1.561%.
	FRA	0245 ET	0645	French Apr consumer spending expected -0.2% m/m Mar +1.2%, expected +2.9% y/y, Mar +2.7%.

**B. Future News:**

Sometime this week:

	GER	n/a		German Mar industrial output, Feb +0.5% m/m, -5.1% y/y.
		n/a		German Apr PPI, Mar +0.3 m/m, -0.2 y/y.
Fri	US	0830 ET	1230	Q1 GDP expected to be revised to +6.0% from last +5.8% q/q, GDP price deflator expected unrevised at +0.8%.
				Q1 corporate profits.
		1000 ET	1400	Apr new home sales expected +0.8% at 885,000, from Mar at 878,000.
	UK	0430 ET	0830	UK Q1 GDP expected +0.1% q/q, previous unch, expected +1.0% y/y, previous +1.6%.
	FRA	0245 ET	0645	French Q1 GDP expected +0.4% q/q and +0.6% y/y.
		0250 ET	0650	French Apr CPI, Mar +0.5% m/m, +2.1% y/y. Apr CPI EU harmonized, Mar 0+0.5% m/m, Mar +2.2% y/y.
	JPN	0100 ET	0500	Japan BOJ releases minutes of Apr 10-11 meeting.
Week of May 27-31				
Sometime this week:				
	GER	n/a		German Mar construction orders, Feb +6.1% y/y, -1.5% y/y.
				German Apr import price index, Feb +0.8% m/m, -2.5% y/y.
				German Apr wholesale sales, SA -0.7% m/m, NSA -7.4% y/y.
Sun	JPN	1950 ET	2350	Japan Apr large retailer sales, Mar -1.5%.
Mon	US			Memorial Day US Markets closed.
	GER	0400 ET	0800	German May IFO ind. survey (business climate), Apr 90.5.
				German May IFO current assessment, Apr 76.9., IFO expectations, Apr 104.6.

Tue	US	0830 ET	1230	Apr personal income expected +0.3%, Mar +0.4%. Apr spending expected +0.7%, Mar +0.4%.
		0900 ET	1300	Redbook weekly retailer sales.
		1000 ET	1400	May consumer confidence expected 110.0, Apr 108.8. Apr existing home sales expected -0.9% at 5,350,000, from Mar 5,400,000.
	UK	0430 ET	0830	UK BBA mortgage lending figures.
	JPN	1950 ET	2350	Japan Apr industrial production, Mar +0.8% m/m.
Wed	US	1300 ET	1700	Treasury sells \$27 billion in 2-year T-notes for \$4.9 bln new cash.
	FRA	0245 ET	0645	France May business confidence indicator, Apr 97.0. France Mar production outlook indicator, Apr -16.0.
Thu	US	0000 ET	0400	Chicago Fed releases national activity index for Apr.
		0830 ET	1230	Initial unemployment claims for week ending May 25th.
		n/n		Earnings expected today: Costco Wholesale, Dollar General, Neiman Marcus.
	UK	0430 ET	0830	UK Mar index of distribution. UK Apr M4 money supply, m/m and y/y. UK Apr Sterling lending. UK Apr net consumer credit.
	JPN	1930 ET	2330	Japan Apr unemployment rate expected 5.3%, Mar 5.2%. Japan Apr job to applicant ratio expected .51, Mar .51. Japan Apr household spending, Mar -1.2% y/y. Japan May Tokyo consumer prices SA, Apr -0.2%, less food -0.4%. Japan May Tokyo consumer prices , Apr -1.3% y/y, less food -1.1% y/y. Japan Apr national consumer prices SA, Mar unch, less food unch. Japan Apr national consumer prices, Mar -1.2% y/y, less food, -0.7% y/y.
Fri	US	0830 ET	1230	Q1 final unit labor costs expected -5.5%, previous -5.4%. Q1 final nonfarm productivity expected 8.7%, previous +8.6%.
		1000 ET	1400	Late-May University of Michigan consumer confidence expected 96.0, early-May +3.0 to 96.0. May Chicago purchasing managers expected 55.0, Apr 54.7. Apr factory orders expected +0.3%, Mar +0.4%.
	JPN	0030 Et	0430	Japan Apr crude oil imports, Mar -6.4% y/y.
		0100 ET	0500	Japan Apr construction orders, Mar -12.9% y/y. Japan Apr housing starts, Mar -6.2% y/y.
	FRA	0245 ET	0645	France Apr unemployment rate Mar 9.1%, unemployment rate change, Mar 13,000.
		0250 ET	0650	France Apr PPI, Mar +0.7% m/m, -0.7% y/y.
Week of June 3-7				
Sometime this week:				
Sun	JPN	1950 ET	2350	Japan Apr average lending rate.
	US	Jun 3-4		May domestic vehicle sales, Apr 14,000,000.
Mon	US	1000 ET	1400	Apr construction spending, Mar -0.9% May ISM manufacturing index, Apr 53.9. Mar ISM prices paid, Apr 60.3.
	UK	0430 ET	0830	UK CIPS purchasing managers index.
Tue	UK	0430 ET	0830	UK CIPS construction index.
	JPN	0100 ET	0500	Japan Apr leading economic index. Japan Apr coincident index.
	FRA	0245 ET	0645	French May consumer confidence indicator, Apr -18.0.
Wed	US	1000 ET	1400	May ISM non-manufacturing, Apr 55.3.
	UK	0430 ET	0830	UK May M0 money supply, Apr +0.9 m/m, +8.0% y/y. UK May official reserve (changes). UK CIPS services index.
		0600 ET	1000	UK CBI quarterly distributive trades report.
		n/a		UK Bank of England monetary policy committee meets. UK BRC shop price index.
Thu	US	0830 ET	1230	Initial unemployment claims for week ending Jun 1.
		1525 ET	1925	San Francisco Fed pres. Parry speaks at financial analysts meeting in Oregon.
	EUR	0745 ET	1145	ECB announces interest rates, current 3.25%.
	GER	0600 ET	1000	German Apr factory orders, Mar unch m/m, -3.4% y/y.
	UK	0700 ET	1100	UK Bank of England announces rates, current 4.0%
	JPN	0030 ET	0430	Japan May consumer confidence.
		1950 ET	2350	Japan Q1 GDP preliminary, previous -1.2%.

Fri	US	0830 ET	1230	May unemployment rate, Apr 6.0%. May average hourly earnings, Apr +0.1%. May change in non-farm payrolls, Apr 43,000. May change in manufacturing payrolls, Apr -19,000. May average weekly hours, Apr 34.1.
		1000 ET	1400	Apr wholesale inventories, Mar unchanged.
		1500 ET	1900	Apr consumer credit, Mar \$4.6 bln.
	GER	0355 ET	0755	German May unemployment change SA, Apr 6,000. German May unemployment EU-Def, Apr 8.1%, unemployment rate SA 9.6%.
	JPN	0100 ET	0500	Japan Apr household spending, Mar -1.0% y/y.
	FRA	0245 ET	0645	French Apr central government balance (Euros)
Week of June 10-14				
Sometime this week:				
	GER	n/a		German Apr retail sales SA, Mar +1.2% m/m, -4.5% y/y. German Mar CPI final, previous +0.1% m/m, +1.6% y/y.
	JPN	n/a		Japan Apr current account total, Mar 2202.5 bln Yen, adjusted 1547.5 bln Yen.
Sun	JPN	1950 ET	2350	Japan May bank lending, May -4.8% y/y Japan May domestic wholesales price index, Apr unch. Japan May Money Supply M2+Cd, +3.6% y/y.
Mon	UK	0430 ET	0830	UK May PPI input SA, Apr +0.9% m/m, -3.7% y/y UK May PPI output NSA, Apr +0.5% m/m, +0.2% y/y.
		1430 ET	1830	UK BRC retail sales monitor.
	JPN	0100 ET	0500	Japan Apr machine orders, Mar -6.2% m/m.
Tue	GER	0200 ET	0600	German Apr currant account, Mar 7.5 bln (Euro). German Apr trade balance, Mar 12.4 bln.
		0600 ET	1000	German Apr industrial output, m/m and y/y.
		0900 ET	1300	German Jun ZEW survey (economic sentiment).
	UK	0430 ET	0830	UK Apr visible trade balance, Mar -3004. UK Apr trade balance non EU, Mar -2169. UK Apr industrial production, +0.4% m/m, -5.9% y/y. UK Apr Manufacturing production, Mar -0.8% m/m, -6.8%
Wed	US	0830 ET	1230	May Imports all commodity price, Apr +1.2%.
		1400 ET	1800	Federal Reserve's beige book.
	UK	1901 ET	2301	UK Apr total housing starts NSA, Mar 18,900.
	FRA	0245 ET	0645	French May CPI, m/m and y/y. French May CPI EU harmonized, m/m and y/y.
Thu	US	0830 ET	1230	Initial unemployment claims for week ending Jun 8. May PPI, Apr -0.2%, less food and energy +0.1%. May retail sales, Apr +1.2%, less autos +1.0%.
	UK	0430 ET	0830	UK New construction orders.
	JPN	0030 ET	0430	Japan Apr industrial production final m/m. Japan Apr capacity utilization final.
	FRA	0250 ET	0650	French Apr industrial production, m/m and y/y. French Apr manufacturing production, m/m and y/y.

#### Future News:

June 9 & 16: French Parliamentary elections.

Upcoming Central Bank meetings:

FOMC: June 25-26, Aug 13, Sep 24, Nov 6, Dec 10.

#### Last G7 monetary policy changes:

US Funds rate last cut by 25 bp to 1.75% on 12/11/01, discount rate -25 bp to 1.25%. Funds rate cut by 175 bp after Sep 11th, and by an overall 475 bp in 2001 easing cycle.

CAN Overnight rate target +25 bp to 2.25% on 4/16/02, up from 40-year low of 2.00%. Prior to 4/02 rate hike, BOC had cut by total of 3.75 bp since Jan 2000.

UK Base rate cut by a total of 200 bp in 2001 cycle to current 4.0%. Last change -50 bp to 4.00% on 11/02/01.

ECB Refinancing rate currently at 3.25%, last cut by 50 bp on 11/8/01. Overall ECB rate cut was 150 bp in 2001.

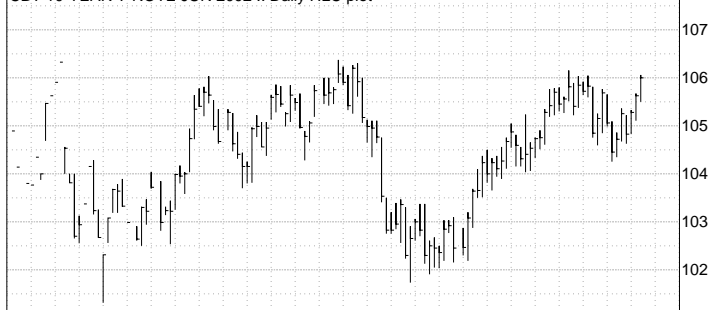
JPN Discount rate at .10%, unsecured overnight call loan rate near zero. BOJ boosted monthly JGB purchases by 25% to 1 trillion yen at Feb 28 meeting.

**COPYRIGHT, 1982-2002, OPTIMA INVESTMENT RESEARCH, INC (312-427-3616)~**

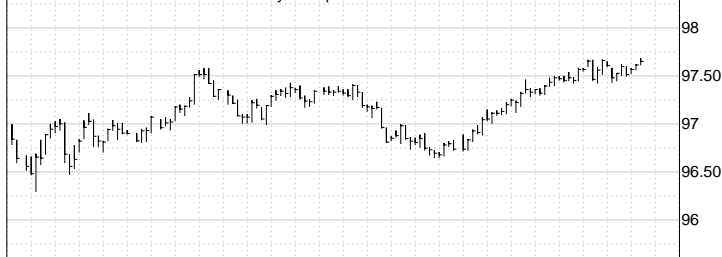
DAILY U.S. MARKET OVERVIEW

Optima Investment Research

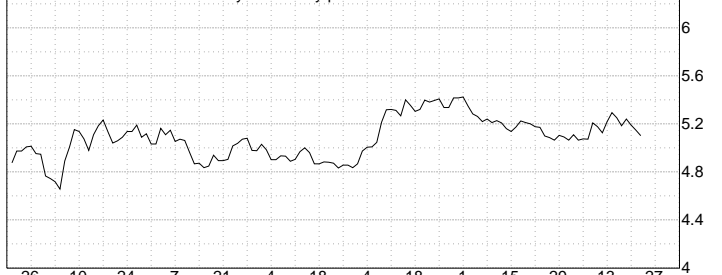
CBT 10-YEAR T-NOTE JUN 2002 .. Daily HLC plot



IMM EURODOLLAR SEP 2002 .. Daily HLC plot



US 10YR T-NOTE YIELD .. Daily Close only plot



NOV-01 DEC JAN-02 FEB MAR APR MAY 27

Optima Investment Research

S&P 500 STOCK INDEX .. Daily HLC plot



DOW JONES INDUSTRIALS .. Daily HLC plot



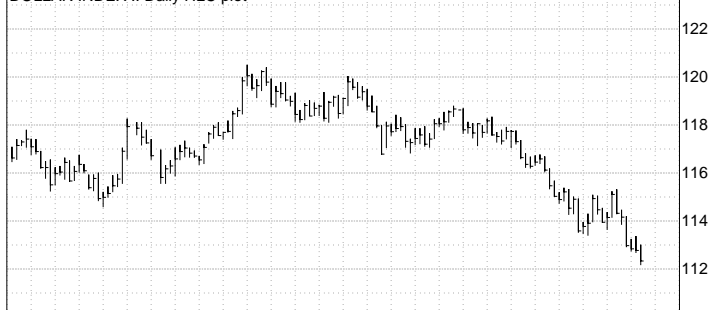
NASDAQ COMPOSITE INDEX .. Daily HLC plot



NOV-01 DEC JAN-02 FEB MAR APR MAY 27

Optima Investment Research

DOLLAR INDEX .. Daily HLC plot



DOLLAR/YEN .. Daily HLC plot



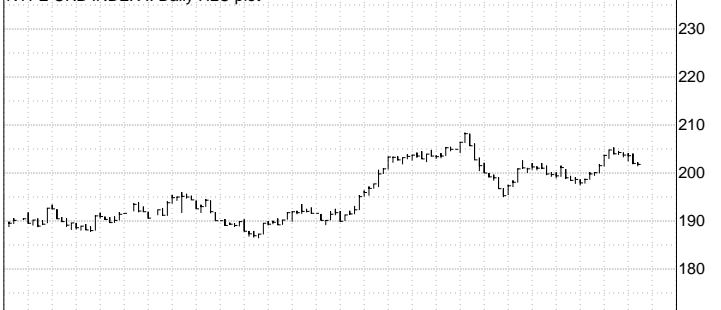
EURO / US\$ .. Daily HLC plot



NOV-01 DEC JAN-02 FEB MAR APR MAY 27

Optima Investment Research

NYFE CRB INDEX .. Daily HLC plot



COMEX GOLD JUN 2002 .. Daily HLC plot



NYMEX LIGHT CRUDE OIL JUL 2002 .. Daily HLC plot



NOV-01 DEC JAN-02 FEB MAR APR MAY 27

SYNTHETIC DATA PRIOR TO 01/01/99

**OPTIMA TECHNICAL PICTURE - 10-YEAR T-NOTE ^ Thu 5/23/02**

The June 10-year T-Note posted an overall low of 105-160 during Tuesday night's a/c/e session. TYM opened higher yesterday and traded sideways to higher the entire session before settling +12 ticks at a 2-3/4 month high settlement of 106-000. The contract posted a 3-week high of 106-020 and a pit session low of 105-235. The cash note settled +11 ticks at a 2-week high settlement of 98-09 (5.102%). The 9-day RSI rose to 61.8 from 57.4 where it is neutral. Volume for Tuesday's session was 353,684 contracts while open interest fell -4,805 contracts to 822,177. Estimated volume for yesterday's session was 375,000. The short term trend is now cautiously bullish with yesterday's 3-week high and 2-3/4 month high settlement and last Tuesday's 1-month low and low settlement. The intermediate term trend is neutral with the note trading near the top of a 5-month range. The long term trend is bearish with the contract within striking distance of penetrating the December 17th contract low. The unweighted NOB (TYM-USM) fell -3 ticks yesterday to close at 140. Primary resistance levels for TYM are: 106-020, 106-050, 106-095, 106-120, and 106-250. Support levels for TYM are: 105-160, 105-035, 104-265, 104-080, 104-010, and 103-210.

**BASIS DATA:** Cash 4-7/8% note (TYM02)(.9194) Basis: 27/32 Unch.

**SUPPORT/RESISTANCE LEVELS -- 10-YEAR T-NOTE FUTURE (TYM02)**

112-130 All time high (TYZ01, Nov 1)	105-035 Tuesday's low
109-285 Contract high (Nov 7)	104-265 Monday's low
108-290 4-3/4% cash yield (BASIS@27)	104-240 5-1/4% cash yield (BASIS@27)
107-270 4-7/8% cash yield (BASIS@27)	104-175 100-day average
106-250 5-00% cash yield (BASIS@27)	104-145 1-month low settle (Last Tuesday)
106-120 6-month high (Feb 22)	104-100 50-day average
106-095 3-month high (Feb 28)	104-080 1-month low (Last Tuesday)
106-065 5-1/4 month high settle (Feb 27)	104-010 1-1/4 month low (April 18)
106-050 2-3/4 month high (May 1)	103-240 5-3/8% cash yield (BASIS@27)
106-020 3-week high (Yesterday)	103-210 1-1/2 month low (April 9)
<b>*106-000 2-3/4 month high settle (Wednesday)</b>	102-240 5-1/2% cash yield (BASIS@27)
105-275 Pivot Point	102-095 Contract low settle (March 20 & 14)
105-250 5-1/8% cash yield (BASIS@27)	102-010 2-month low (March 25)
105-235 Yesterday's pit session low	101-290 2-1/4 month low (March 21)
105-205 3-day average	101-235 5-month low (March 15)
105-160 Yesterday's overall low (a/c/e)	101-100 Contract low (Dec 17)

**RETRACEMENTS -- 10-YEAR T-NOTE FUTURE (TYM02)**

6-1/4 month 8-18.5/32 point downmove from 109-285 (11/07/01) to 101-100 (12/17/01)

59% retrace (Feb 22 high) 106-120

HIGH	3/4	2/3	.618	1/2	.382	1/3	1/4	LOW
109-285	107-240	107-010	106-195	105-195	104-190	104-055	103-145	101-100

**SUPPORT/RESISTANCE LEVELS -- CASH 10-YEAR T-NOTE (4-7/8% of 02/07)**

106-10 All-time high (Nov 1) (4.101%)	98-03 5-1/8% cash yield
105-18 All-time high settle (Nov 7) (4.190%)	97-25 Yesterday's low (5.168%)
102-31 4-1/2% cash yield	97-05 5-1/4% cash yield
101-31 4-5/8% cash yield	96-27 1-1/2 month low settle (Last Tuesday) (5.294%)
101-30 6-month high (Dec 4) (4.629%)	96-20 1-1/2 month low (Last Tuesday) (5.323%)
100-31 4-3/4% cash yield	96-07 5-3/8% cash yield
100-21 5-1/2 month high (Jan 16) (4.791%)	95-27 10-1/2 month low settle (April 1) (5.424%)
100-20 4-month high (Feb 22) (4.796%)	95-15 11-1/2 month low (April 2 & March 15) (5.475%)
100-11 6-month high settle (Feb 22) (4.831%)	95-10 5-1/2% cash yield
100-00 4-7/8% cash yield	94-31 17-1/2 month low (5/29/01) (5.534%)
99-01 5-00% cash yield	94-13 5-5/8% cash yield
98-28 2-1/2 month high (May 1) (5.022%)	92-12 19-1/2 month low (11/7/00) (5.895%)
98-18 2-1/2 month high settle (May 3, May 4 & April 26) (5.063%)	92-04 21-1/2 month low (9/21/00) (5.927%)
98-12 2-week high (Yesterday) (5.089%)	90-10 23-month low (7/19/00) (6.185%)
<b>*98-09 2-week high settle (Wednesday)</b>	87-20 2-1/4 year low (5/9/00) (6.579%)

Note: Prior to the auction date of (02/06/02) for the 10-yr cash note (4-7/8% note of 03/12), a "synthetic" price history is used based on the yield of the benchmark 10-yr note.

**RETRACEMENTS -- CASH 10-YEAR T-NOTE:** Retracements calculated from cash note yield, not price.

2-year 18-22/32 point upmove from 87-20 (6.579%) (5/9/00) to 106-10 (4.101%) (11/1/01)

55% retrace (April 2nd & March 15th) (95-15) (5.475%)

HIGH	1/4	1/3	.382	1/2	.618	2/3	3/4	LOW
106-10	101-07	99-19	98-21	96-14	94-08	93-12	91-29	87-20
4.101%	4.721%	4.927%	5.048%	5.340%	5.632%	5.753%	5.960%	6.579%

**OPTIMA TECHNICAL PICTURE - 5-YEAR T-NOTE ^ Thu 5/23/02**

FVM posted an overall contract high of 106-260 and overall low of 106-110 during yesterday's a/c/e session. The June 5-year T-Note opened higher yesterday and traded sideways to higher the entire session before settling +9 ticks at a contract high settlement of 106-225. FVM posted a pit session high of 106-250 and a pit session low of 106-180. The cash note settled +8 ticks at a 2-week high settlement of 99-26 (4.418%). The 9-day RSI rose to 63.9 where it is neutral. Volume for Tuesday's session was 172,434 while open interest fell -191 contracts to 657,412. Estimated volume for yesterday's session was 235,000. The short-term trend is now bullish with yesterday's contract high and high settlement. The intermediate-term trend is neutral with FVM trading near the top of a 3-month range while the long-term trend is bearish with the March 21st contract low and the March 25th contract low settlement. The primary resistance levels for FVM are: 106-260 and 107-185. Primary support levels for FVM are: 106-110, 106-030, 105-295, 105-140, 105-035, and 104-175.

**BASIS DATA:** Cash 4-3/8% note - (FVM02)(.9316) Basis: 13 -1.

**SUPPORT/RESISTANCE LEVELS -- 5-YEAR T-NOTE FUTURE (FVM02)**

108-040 4-1/8% cash yield (BASIS@13)	105-230 4-5/8% cash yield (BASIS@13)
107-185 5-1/2 month high weekly nearest (2/25/02 H02)	105-200 1-month low settle (Last Tuesday)
107-160 4-1/4% cash yield (BASIS@13)	105-140 1-month low (Last Tuesday)
106-290 4-3/8% cash yield (BASIS@13)	105-115 100-day average
106-260 Contract high (Yesterday-a/c/e)	105-070 50-day average
106-250 Yesterday's pit session high	105-040 4-3/4% cash yield (BASIS@13)
<b>*106-225 Contract high settle (Wednesday)</b>	105-035 1-1/4 month low (April 16 & 19)
106-200 Pivot Point	104-180 4-7/8% cash yield (BASIS@13)
106-180 Yesterday's pit session low	104-175 1-1/2 month low (April 9)
106-140 3-day average	103-310 5-00% cash yield (BASIS@13)
106-110 Yesterday's overall low (a/c/e)	103-180 Contract low settle (March 25)
106-100 4-1/2% cash yield (BASIS@13)	103-160 1-3/4 month low (Apr 2)
106-030 Tuesday's low	103-125 2-month low (March 25)
105-295 Monday's low	103-115 Contract low (Mar 21)

**RETRACEMENTS -- 5-YEAR T-NOTE FUTURE (FVM02)**

2-month 3-14.5/32 point upmove from 103-115 (Mar 21) to 106-260 (Yesterday)

HIGH	1/4	1/3	.382	1/2	.618	2/3	3/4	LOW
106-260	105-305	105-210	105-160	105-030	104-215	104-165	104-070	103-115

**SUPPORT/RESISTANCE LEVELS -- CASH 5-YEAR T-NOTE (4-3/8% 05/07)**

104-08 All time high (Nov 1) (3.448%)	99-29 2-week high (Yesterday) (4.397%)
104-03 All-time high settle (Nov 7) (3.480%)	<b>*99-26 2-week high settle (Wednesday) (4.418%)</b>
104-00 3-1/2% cash yield	99-16 Yesterday's low (4.489%)
103-13 3-5/8% cash yield	99-14 4-1/2% cash yield
102-27 3-3/4% cash yield	98-29 4-5/8% cash yield
102-08 3-7/8% cash yield	98-28 1-1/2 month low settle (Last Tuesday) (4.630%)
101-30 6-month high (Dec 4) (3.943%)	98-21 1-1/2 month low (Last Tuesday) (4.680%)
101-22 4-00% cash yield	98-11 4-3/4% cash yield
101-17 5-1/2 month high (Jan 11) (4.038%)	97-26 4-7/8% cash yield
101-06 4-1/4 month high (Feb 22 & 25) (4.110%)	97-25 10-1/2 month low (Mar 25) (4.877%)
101-04 4-1/8% cash yield	97-09 11-3/4 month low (6/29/01) (4.991%)
100-18 4-1/4% cash yield	97-08 5-00% cash yield
100-08 2-1/2 month high (May 1) (4.319%)	96-30 1-1/4 year low (5/25/01) (5.071%)
100-00 4-3/8% cash yield	96-28 1-1/2 year low (1/25/01) (5.091%)

Note: Prior to the auction date of (5/07/02) for the 5-yr cash note (4-3/8% note of 05/07), a "synthetic" price history is used based on the yield of the benchmark 5-yr note.

**RETRACEMENTS -- CASH 5-YEAR T-NOTE:**Retracements are calculated from cash note yield, not price.

6-1/2 month 6-15/32 point downmove from 104-08 (Nov 1) (3.448%) to 97-25 (Mar 25) (4.877%)

39% retrace (May 1st high) 100-08 (4.319%)

HIGH	3/4	2/3	.618	1/2	.382	1/3	1/4	LOW
104-08	102-19	102-01	101-23	100-31	100-06	99-28	99-11	97-25
3.448%	3.805%	3.924%	3.994%	4.163%	4.331%	4.401%	4.520%	4.877%

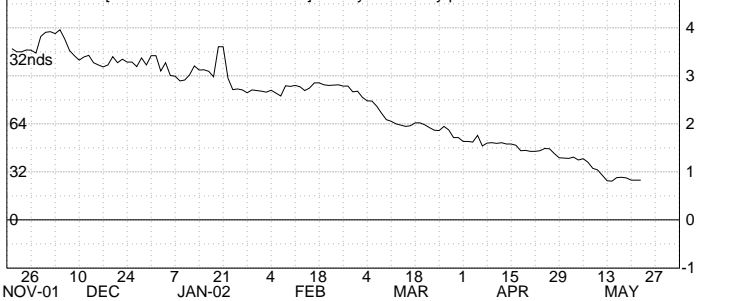
U.S. TREASURY NOTES

Optima Investment Research

CBT 10-YEAR T-NOTE JUN 2002 .. Daily HLC plot

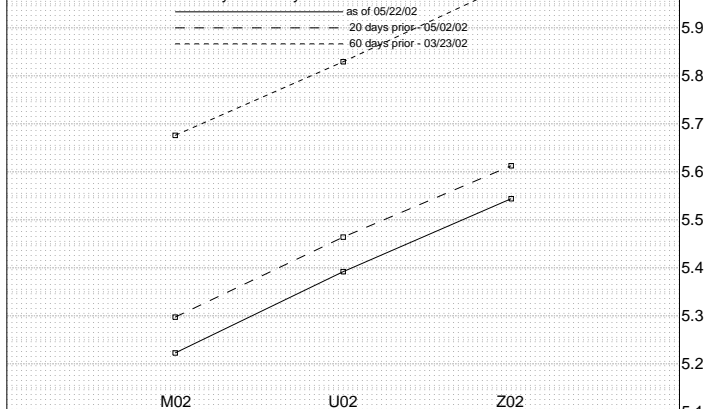


10YR BASIS [4-7/8% 3/12 TYM02 \* .9194] .. Daily Close only plot

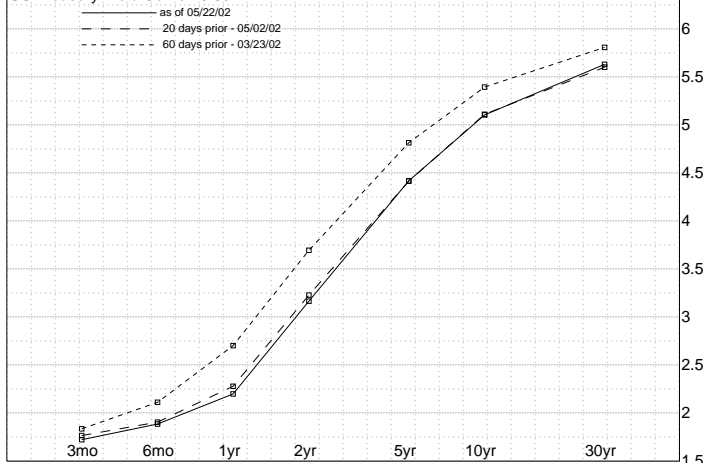


Optima Investment Research

CBT 10-YEAR T-NOTE .. Daily Futures yield curve 20 60



US Treasury Yield Curve 20 60



Optima Investment Research

4-7/8% 10YR T-NOTE 2/12 .. Daily HLC plot

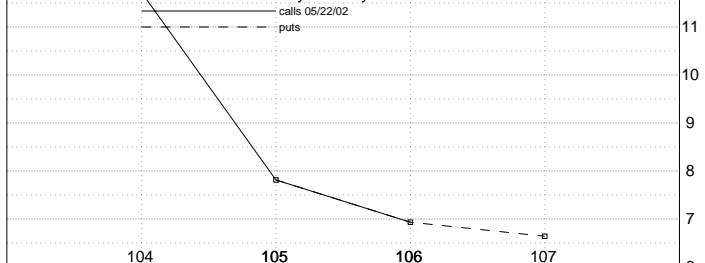


US 10YR T-NOTE YIELD .. Daily HLC plot



Optima Investment Research

CBT 10-YEAR T-NOTE JUN 2002 .. Daily Volatility Skew



CBT 10-YEAR T-NOTE JUN 2002 .. Daily Implied volatility

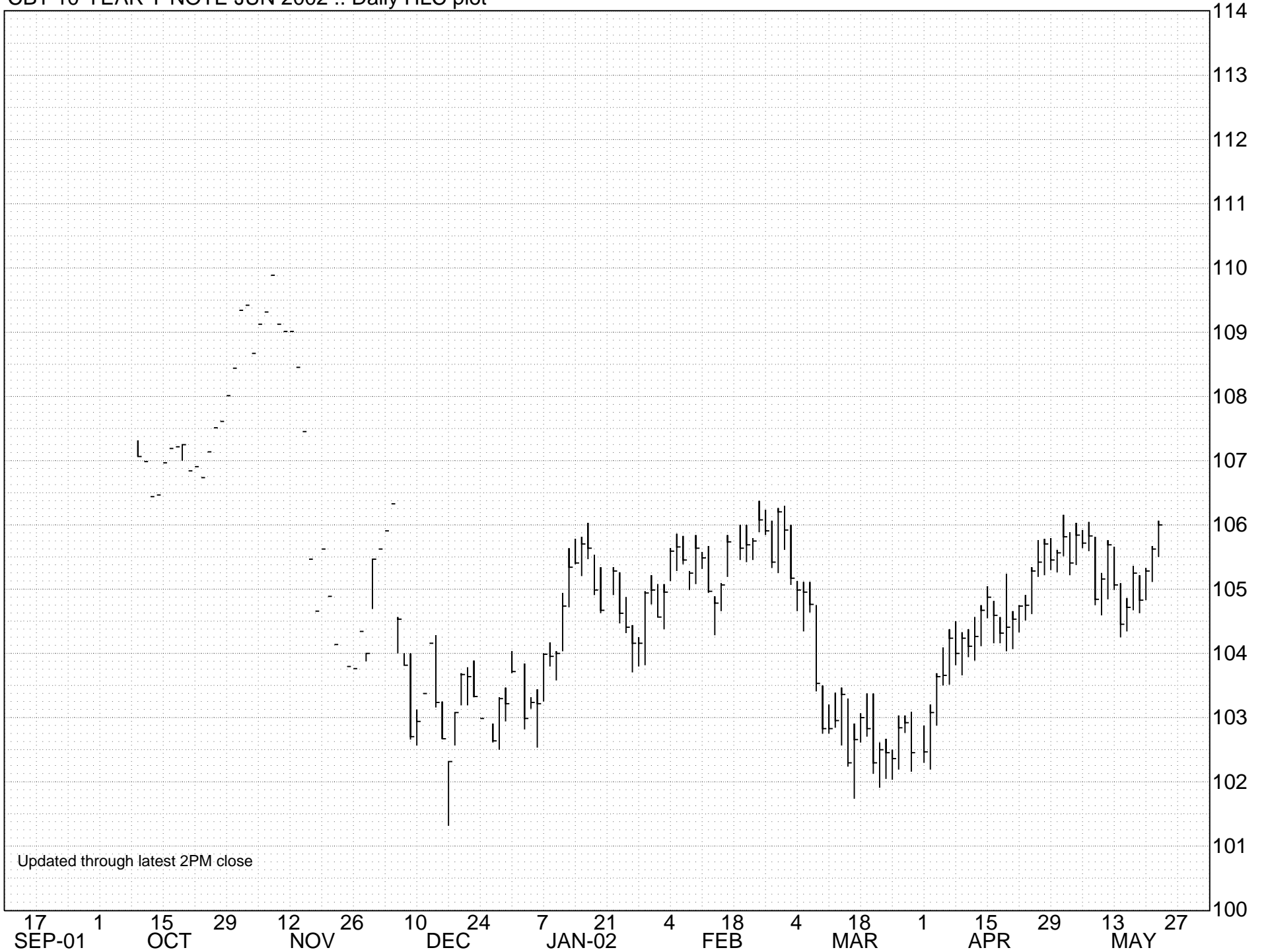


OPTIMA TECHNICAL INDICATORS - FIXED		INCOME FUTURES (CBOT) ^				
As of: 052202	: TYM02	TYU02	FVM02	TUM02	MBM02	USM02
	:					
High:	106-020	104-225	106-260	104-262	104-12	101-29
Low:	105-160	104-100	106-110	104-222	103-30	101-04
Settle:	106-000s	104-210s	106-225s	104-247s	104-05s	101-26s
Change:	+0-120	+0-120	+0-090	+0-037	+0-13	+0-18
	:					
Pivot	R2:106-135	104-305	107-030	104-282	104-19	102-13
Analysis	R1:106-065	104-255	106-285	104-265	104-12	102-03
	Pivot:105-275	104-180	106-200	104-242	104-05	101-20
	S1:105-205	104-130	106-135	104-225	103-30	101-10
	S2:105-095	104-055	106-050	104-202	103-23	100-27
	:					
Momentum 1-10 Day:	+1-050	+1-045	+0-290	+0-100	+0-18	+0-22
[Settle 1-20 Day:	+0-230	+0-210	+0-270	+0-120	+0-14	+0-02
- prev. 1-30 Day:	+1-285	+1-260	+1-225	+0-285	+1-20	+1-18
x-day 1-100 Day:	+2-225	+3-090	+2-095	N/A	+3-08	+2-00
settle]1-200 Day:	N/A	N/A	N/A	N/A	N/A	+0-00
	:					
Moving	3 Day:105-205	104-090	106-140	104-210	103-24	101-09
Averages	4 Day:105-140	104-025	106-100	104-190	103-16	101-01
	5 Day:105-125	104-010	106-090	104-190	103-14	101-00
	9 Day:105-070	103-275	106-050	104-182	103-10	100-30
	10 Day:105-065	103-270	106-045	104-182	103-12	101-00
	18 Day:105-115	104-010	106-045	104-190	103-24	101-18
	20 Day:105-125	104-015	106-045	104-185	103-24	101-20
	30 Day:105-045	103-265	105-290	104-140	103-16	101-11
	50 Day:104-100	103-010	105-070	104-012	102-20	100-14
	100 Day:104-175	103-085	105-115	N/A	102-22	101-00
	200 Day: N/A	N/A	N/A	N/A	N/A	102-02
	:					
Contract	5-D:105-140	104-025	106-100	104-190	103-16	101-01
crosses MA	10-D:105-070	103-275	106-050	104-182	103-10	100-30
today at	20-D:105-120	104-015	106-045	104-187	103-24	101-19
price of:	30-D:105-055	103-270	105-300	104-147	103-17	101-12
	:					
Moving Avg	3-9: +0-135	+0-140	+0-090	+0-027	+0-14	+0-11
Oscillators	5-20: +0-005	-0-005	+0-045	+0-005	-0-10	-0-20
MA Osc zero	3-9:103-055	101-245	104-250	104-017	100-29	98-21
cross today	5-20:105-030	103-280	105-100	104-175	105-03	104-24
	:					
RSI	9-Day RSI: 61.8	61.6	63.9	61.4	60.1	56.8
Prev	9-Day RSI: 57.4	57.2	59.3	57.2	55.2	51.2
Close today for	80:108-290	107-200	108-150	105-237	107-14	106-27
new 9-RSI of:	20: 99-100	97-300	101-275	102-197	97-18	93-26
Simulated +3 Unit:	80.3	80.1	78.6	77.6	79.1	74.5
9-Day RSI +2 Unit:	76.5	76.3	75.2	73.9	75.2	70.4
for settle+1 Unit:	70.9	70.7	70.6	68.9	69.4	64.9
today of: -1 Unit:	47.1	47.1	52.1	49.5	46.1	46.2
-2 Unit:	38.0	38.1	44.0	41.5	37.4	38.9
-3 Unit:	31.9	31.9	38.0	35.7	31.5	33.6
1 Unit = :	1-000	1-000	0-160	0-080	1-00	1-00
	:					
TOTAL CALL/PUT VOL						
RATIO (PREV SESS):	.95					.90
10-DAY AVG	: .93					1.30
1-YEAR AVG	: 1.57					1.42
Stochastics	:					
9-Day Range Raw K:	96.6	97.4	92.0	96.6	89.4	84.0
3-Day EMA K: %K:	73.1	74.4	75.4	83.2	60.5	52.9
3-Day EMA %K: %D:	56.8	57.3	62.7	72.0	44.7	38.5
Price today for :						
%K & %D xover	:104-220	103-100	105-305	104-037	102-19	100-02
%K,%D at xover	: 56.8	57.3	62.7	72.0	44.7	38.5

OPTIMA TECHNICAL INDICATORS - 10YR, 5YR & 2YR NOTES (CASH) ^						
As of: 052202	:10Y Note	10Y Yld	5Yr Note	5Yr Yld	2Yr Note	2Yr Yld
:	NJY	YJY	NHY	YHY	NEY	YEY
High:	98-12	5.168	99-29	4.489	100-150	3.248
Low:	97-25	5.089	99-16	4.397	100-060	3.140
Settle:	98-09s	5.102s	99-26s	4.418s	100-110s	3.165s
Change:	+0-11	-.045	+0-08	-.057	901-240	-.059
Pivot Analysis	R2: 98-24	5.198	100-05	4.526	100-195	3.292
	R1: 98-16	5.150	99-31	4.472	100-155	3.228
	Pivot: 98-05	5.119	99-24	4.434	100-105	3.184
	S1: 97-29	5.071	99-18	4.380	100-065	3.120
	S2: 97-18	5.040	99-11	4.342	100-015	3.076
Momentum 1-10 Day:	+0-26	-.107	+0-24	-.169	+0-060	-.127
[Settle 1-20 Day:	+0-00	+0.002	+0-01	-.008	-0-140	-.056
- prev. 1-30 Day:	+0-31	-.126	+0-23	-.164	+0-005	-.261
x-day 1-100 Day:	+0-23	-.086	+0-00	-.002	+0-055	+0.118
settle]1-200 Day:	-0-14	+0.064	+0-20	-.142	+2-000	-.585
Moving Averages	3 Day: 97-30	5.146	99-18	4.472	701-065	3.223
	4 Day: 97-25	5.169	99-15	4.499	550-290	3.257
	5 Day: 97-24	5.172	99-14	4.503	460-245	3.254
	9 Day: 97-19	5.194	99-11	4.525	400-170	3.261
	10 Day: 97-19	5.192	99-11	4.526	370-160	3.260
	18 Day: 97-29	5.151	99-18	4.474	250-135	3.234
	20 Day: 97-31	5.143	99-19	4.466	235-130	3.234
	30 Day: 97-28	5.154	99-17	4.478	190-145	3.267
	50 Day: 97-11	5.223	99-04	4.574	154-015	3.398
	100 Day: 98-07	5.107	99-24	4.434	127-015	3.226
	200 Day: 99-16	4.942	100-15	4.275	113-155	3.130
Contract crosses MA today at price of:	5-D: 97-25	5.169	99-15	4.499	550-290	3.257
	10-D: 97-19	5.194	99-11	4.525	400-170	3.261
	20-D: 97-30	5.146	99-19	4.469	242-165	3.233
	30-D: 97-29	5.152	99-18	4.475	193-175	3.262
Moving Avg Oscillators	3-9: +0-12	-.048	+0-07	-.052	300-215	-.038
	5-20: -0-07	+0.029	-0-05	+0.037	225-115	+0.019
MA Osc zero cross today	3-9: 95-24	5.438	98-05	4.796	98-170	3.514
	5-20: 98-27	5.023	100-09	4.305	***-***	3.106
RSI	9-Day RSI: 58.6	41.5	58.3	41.8	45.2	41.5
	Prev 9-Day RSI: 53.8	46.2	53.4	46.6	69.8	45.9
Close today for new 9-RSI of:	80: 101-14	5.862	102-04	5.345	055-225	4.209
	20: 92-18	4.676	95-23	3.890	***-***	2.582
Simulated +3 Unit:	79.5	66.8	58.3	64.0	45.3	62.3
9-Day RSI +2 Unit:	75.3	61.2	58.3	58.8	45.3	57.3
for settle+1 Unit:	69.1	53.3	58.3	51.7	45.2	50.6
today of: -1 Unit:	43.8	33.1	58.3	34.6	45.2	35.0
	-2 Unit: 35.0	27.6	58.3	29.6	45.2	30.3
	-3 Unit: 29.1	23.6	58.3	25.8	45.2	26.7
	1 Unit = : 1-00	.100	0-00	.100	1-000	.100
Stochastics	9-Day Range Raw K: 94.6	5.6	92.5	7.4	.0	9.7
	3-Day EMA K: %K: 68.4	31.6	69.0	31.0	42.6	38.4
	3-Day EMA %K: %D: 50.9	49.0	52.7	47.3	45.2	51.3
Price today for %K & %D xover	: 96-29	5.285	98-29	4.623	555-125	3.340
	: 50.9	49.0	52.7	47.3	45.2	51.3

Optima Investment Research  
CBT 10-YEAR T-NOTE JUN 2002 .. Daily HLC plot

05/22/02 17:48 ET



Updated through latest 2PM close

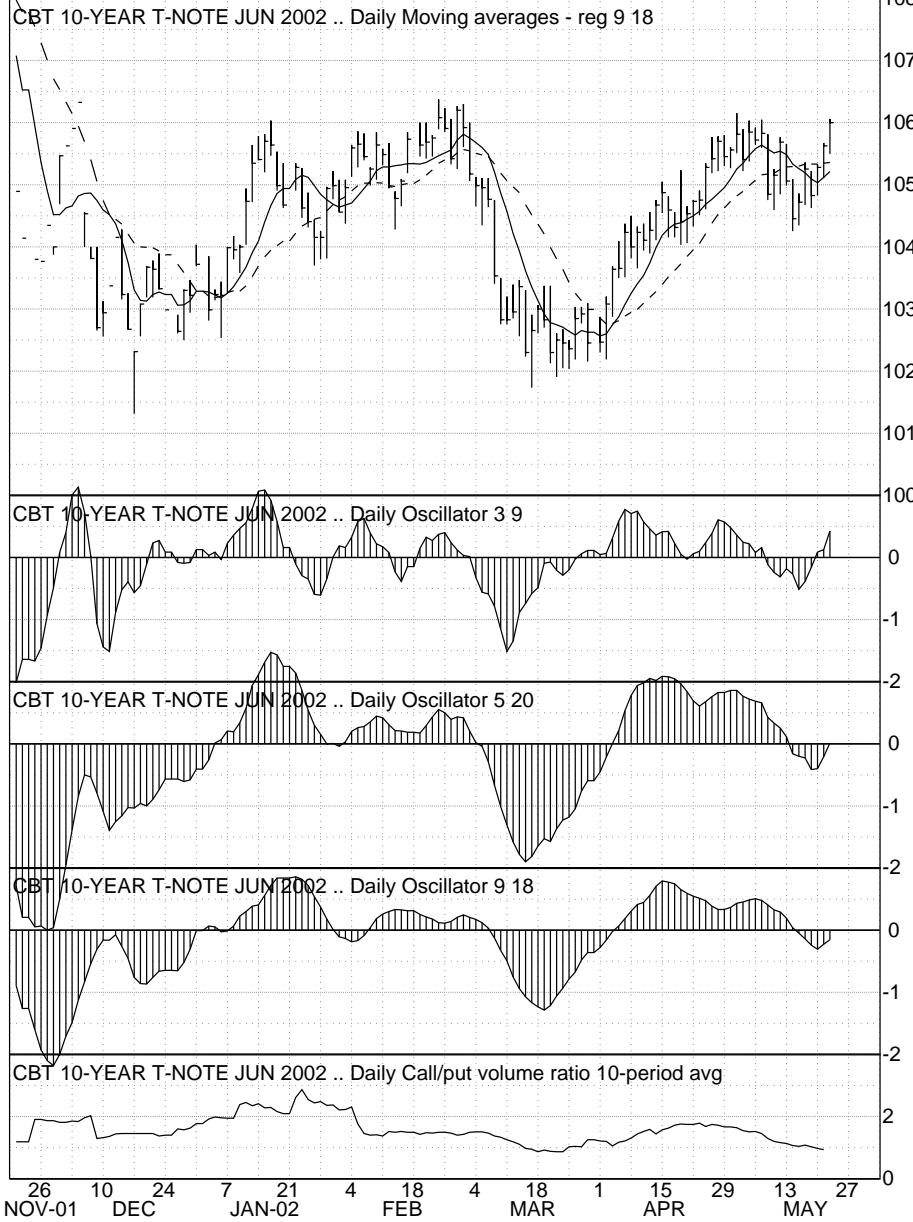
N-1

### TECHNICAL INDICATORS - 10-YEAR T-NOTES

Optima Investment Research



Optima Investment Research



Optima Investment Research  
CBT 10-YEAR T-NOTE JUN 2002 .. Point & figure 1 3

05/22/02 17:49 ET



22

MAY

N-3

Optima Investment Research  
CBT 10-YEAR T-NOTE JUN 2002 .. Point & figure 2 6

05/22/02 17:49 ET

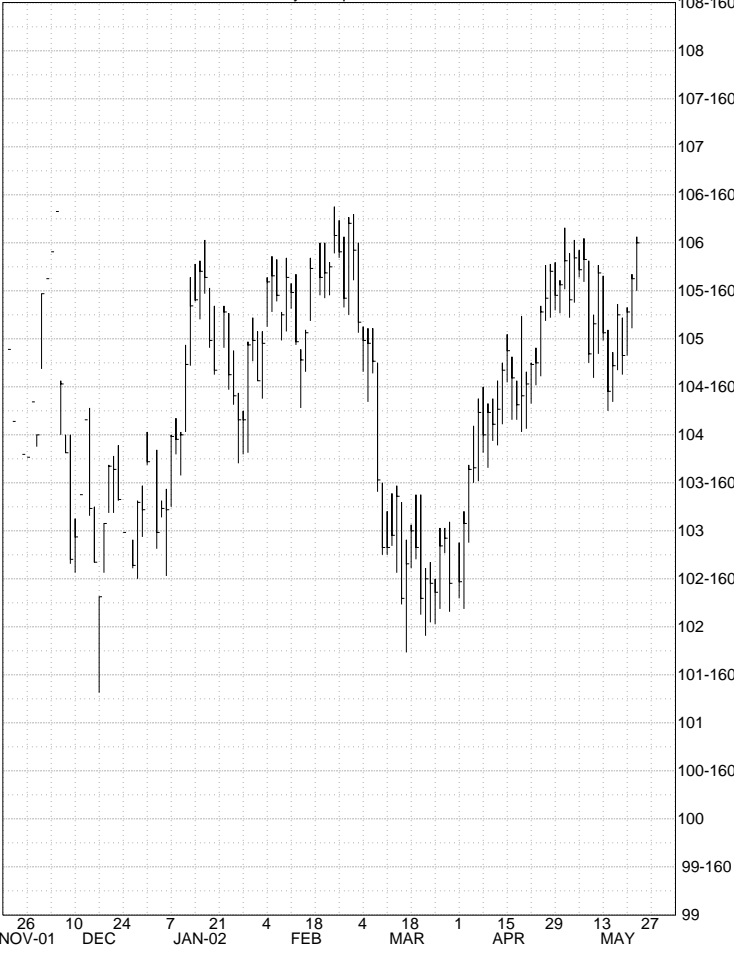


Updated through latest 2PM close

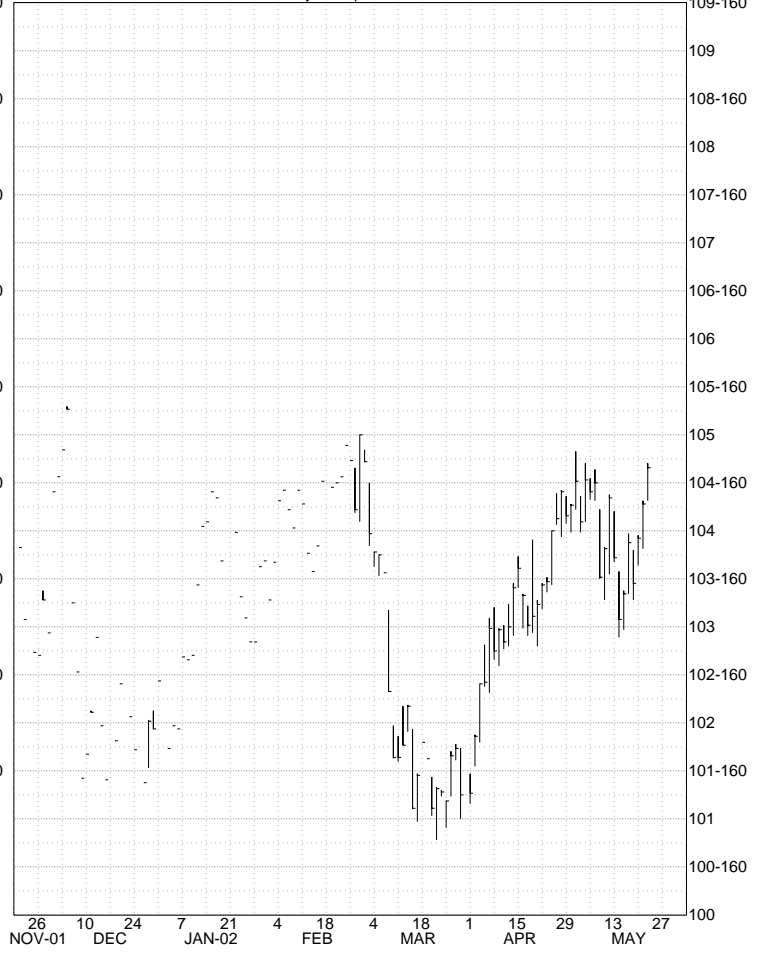
N-4

10-YEAR NOTE - BACK MONTHS & CALENDAR SPREADS

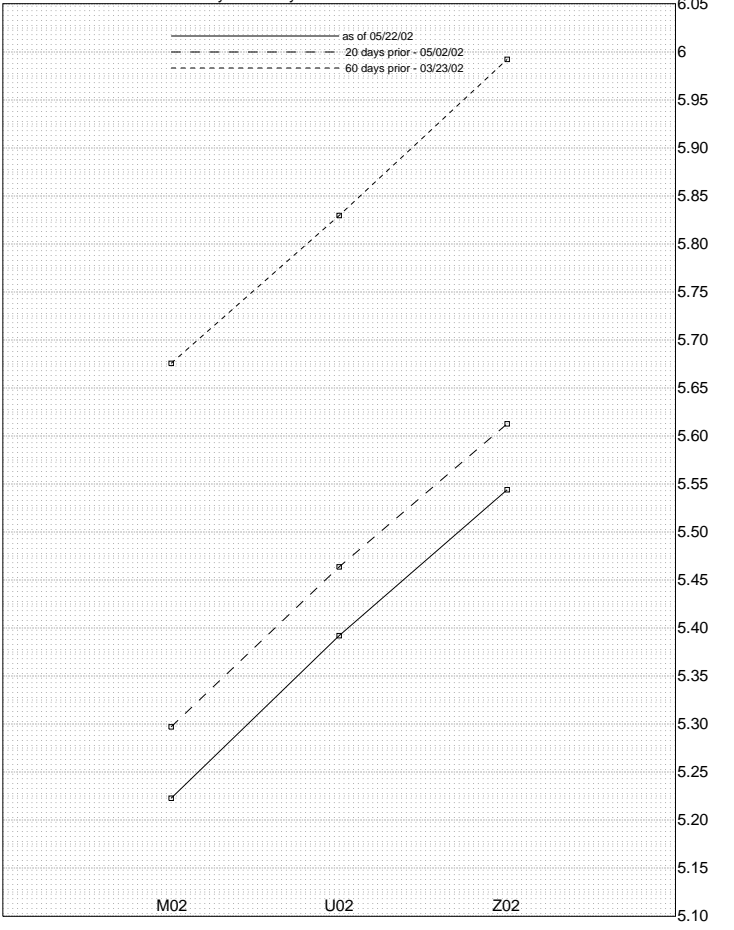
Optima Investment Research  
CBT 10-YEAR T-NOTE JUN 2002 .. Daily HLC plot



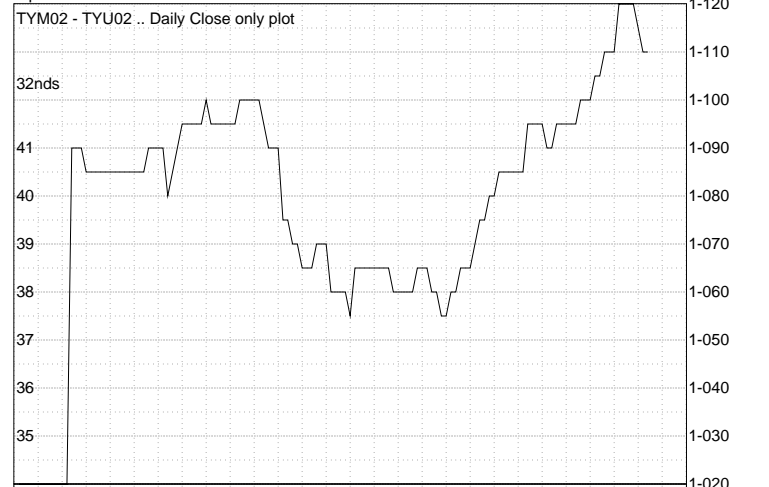
Optima Investment Research  
CBT 10-YEAR T-NOTE SEP 2002 .. Daily HLC plot



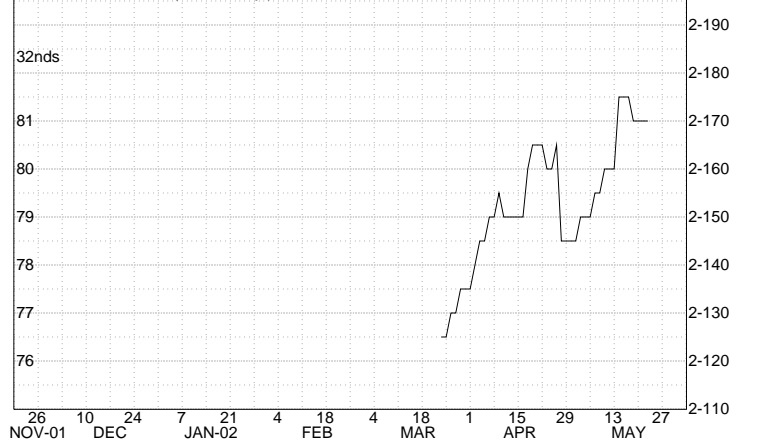
Optima Investment Research  
CBT 10-YEAR T-NOTE .. Daily Futures yield curve 20 60



Optima Investment Research  
TYM02 - TYU02 .. Daily Close only plot



TYM02 - TYZ02 .. Daily Close only plot

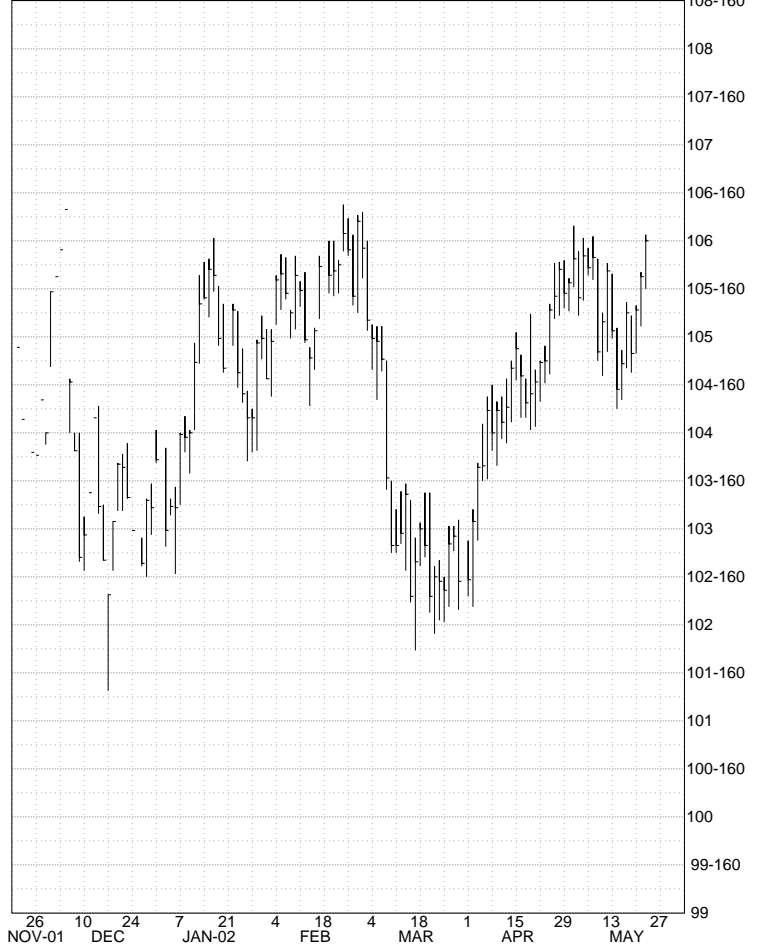


10-YEAR NOTE - CASH & BASIS

Optima Investment Research  
4-7/8% 10YR T-NOTE 2/12 .. Daily HLC plot



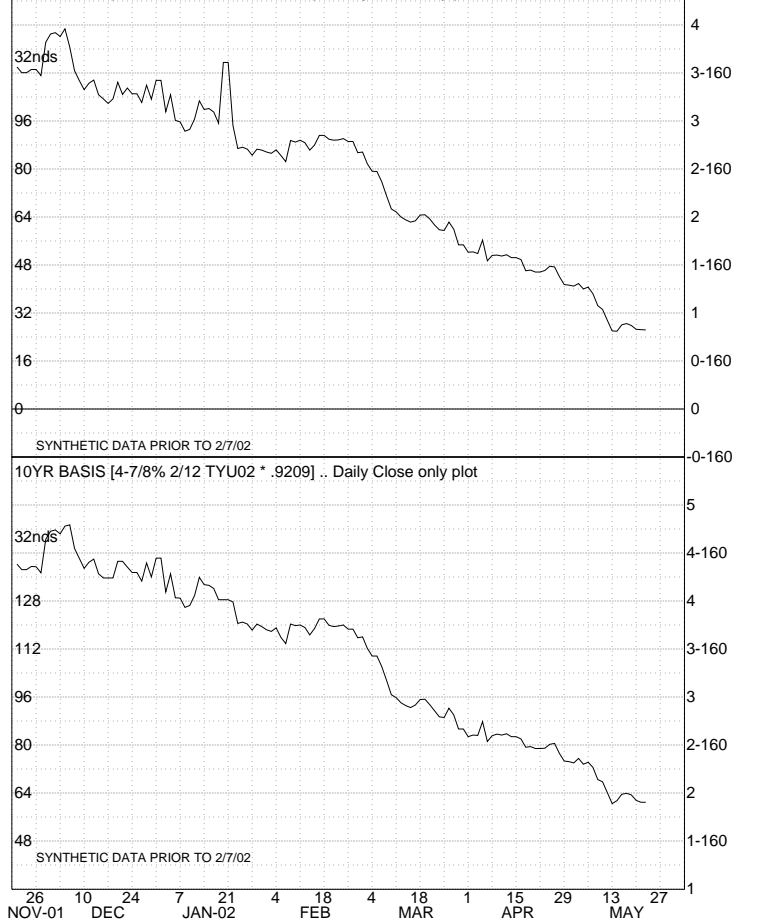
Optima Investment Research  
CBT 10-YEAR T-NOTE JUN 2002 ... Daily HLC plot



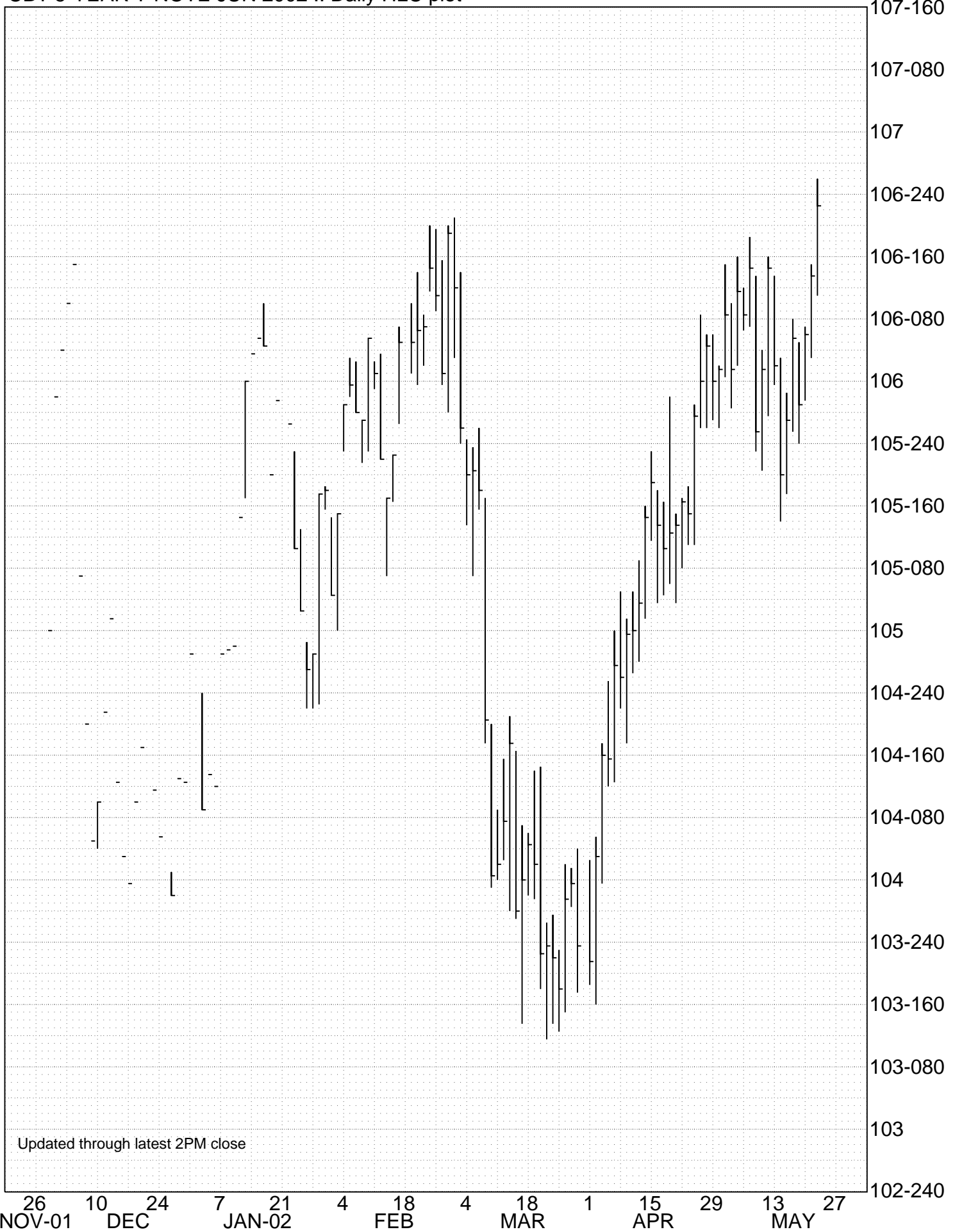
Optima Investment Research  
US 10YR T-NOTE YIELD .. Daily HLC plot



Optima Investment Research  
10YR BASIS [4-7/8% 3/12 TYM02 \* .9194] .. Daily Close only plot



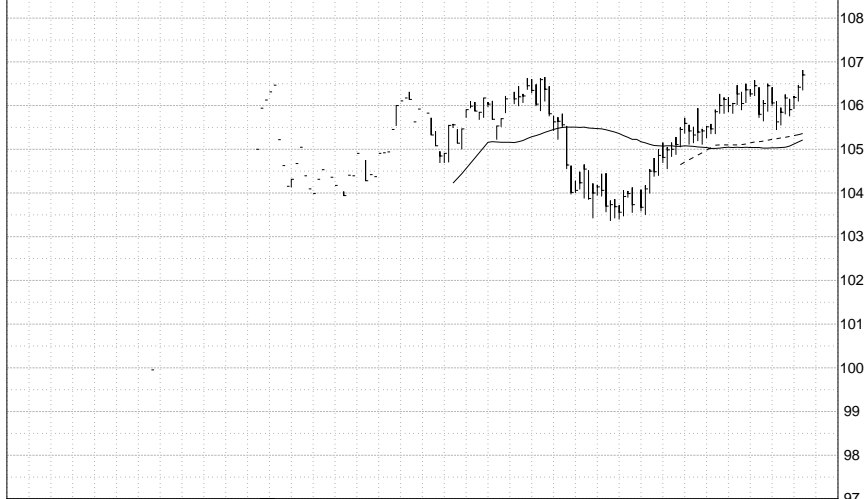
Optima Investment Research  
CBT 5-YEAR T-NOTE JUN 2002 .. Daily HLC plot



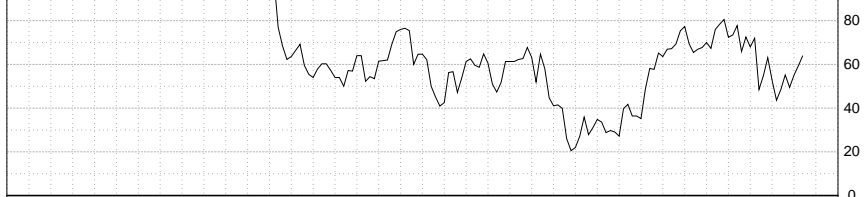
### TECHNICAL INDICATORS - 5-YEAR T-NOTES

Optima Investment Research

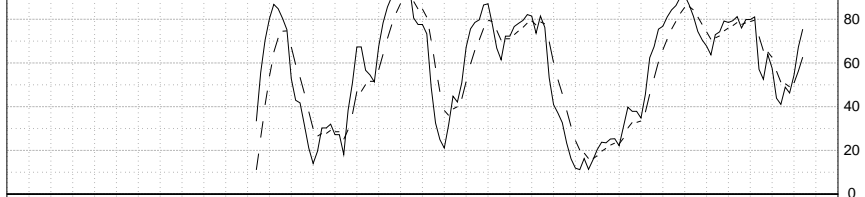
CBT 5-YEAR T-NOTE JUN 2002 .. Daily Moving averages - reg 50 100



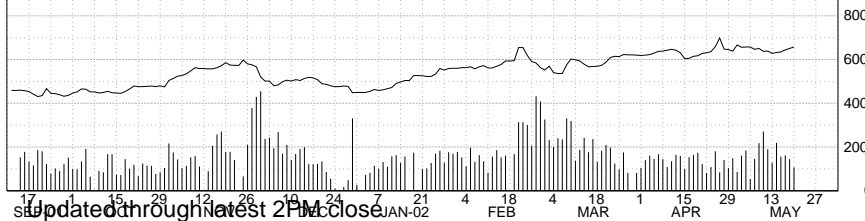
CBT 5-YEAR T-NOTE JUN 2002 .. Daily Relative strength 9



CBT 5-YEAR T-NOTE JUN 2002 .. Daily Stochastic - %k and %d 9 3



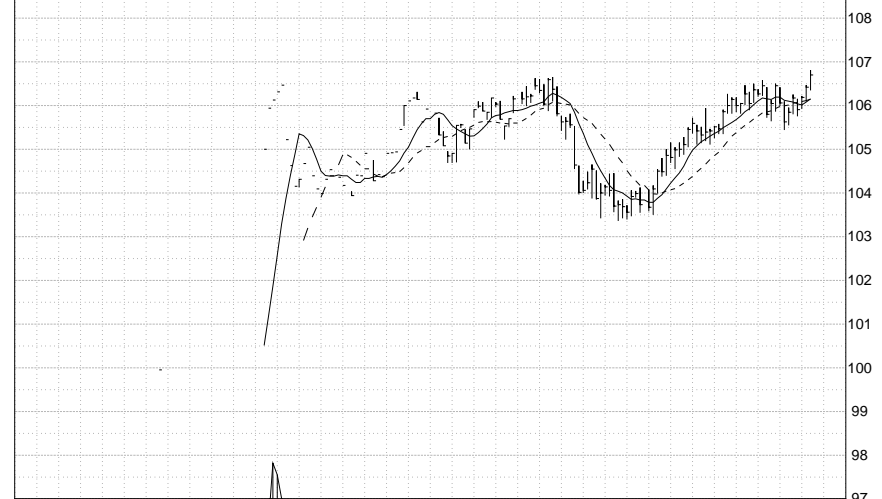
CBT 5-YEAR T-NOTE VOL + OI .. Daily



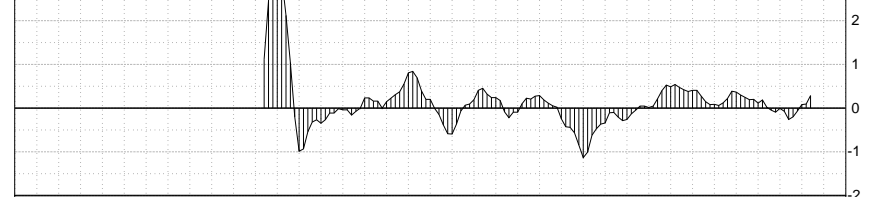
Updated through latest 2 PM close

Optima Investment Research

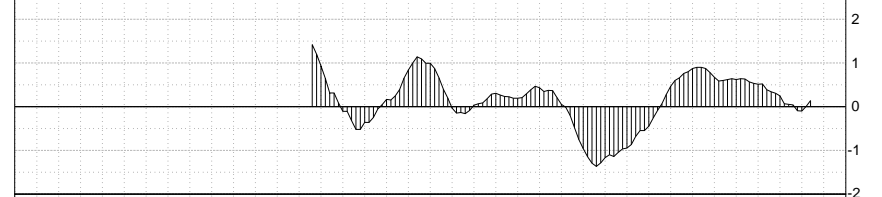
CBT 5-YEAR T-NOTE JUN 2002 .. Daily Moving averages - reg 9 18



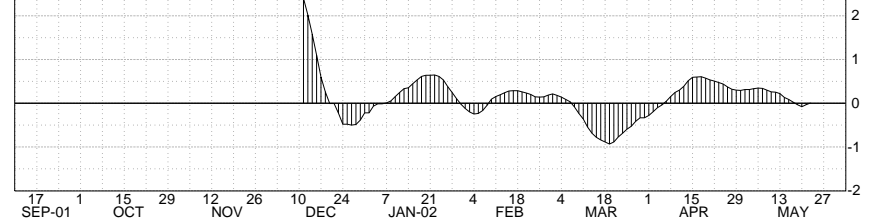
CBT 5-YEAR T-NOTE JUN 2002 .. Daily Oscillator 3 9



CBT 5-YEAR T-NOTE JUN 2002 .. Daily Oscillator 5 20



CBT 5-YEAR T-NOTE JUN 2002 .. Daily Oscillator 9 18



Updated through latest 2 PM close

Optima Investment Research  
CBT 5-YEAR T-NOTE JUN 2002 .. Point & figure 1 3

05/22/02 17:50 ET



Updated through latest 2PM close

N-9

Optima Investment Research  
CBT 5-YEAR T-NOTE JUN 2002 .. Point & figure 2 6

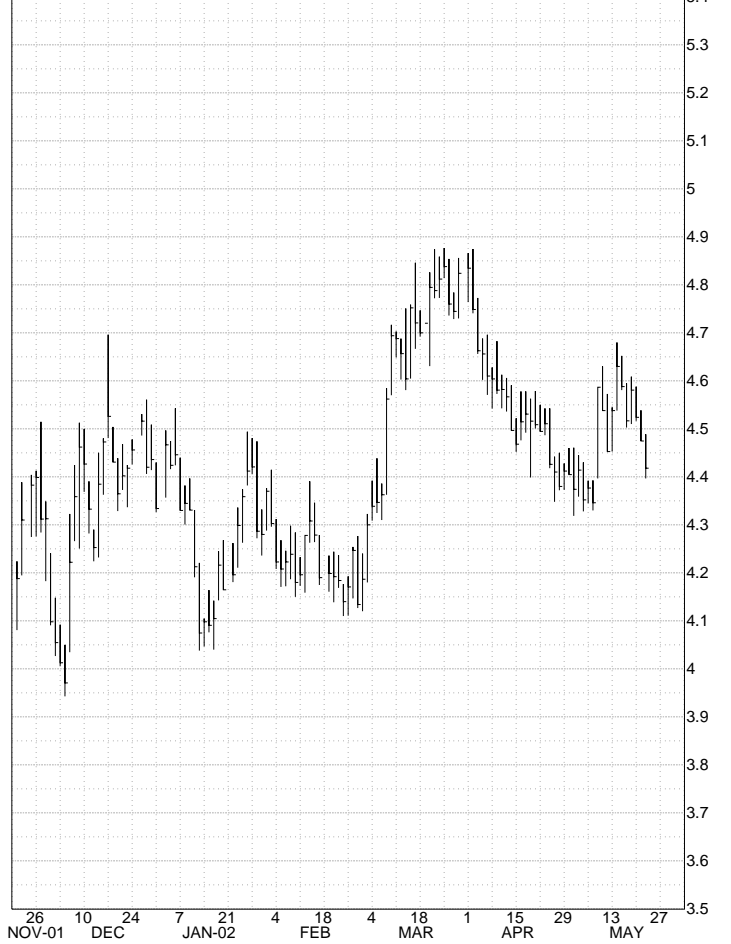


5-YEAR NOTE - CASH & BASIS

Optima Investment Research  
4-3/8% 5YR T-NOTE 5/07 .. Daily HLC plot



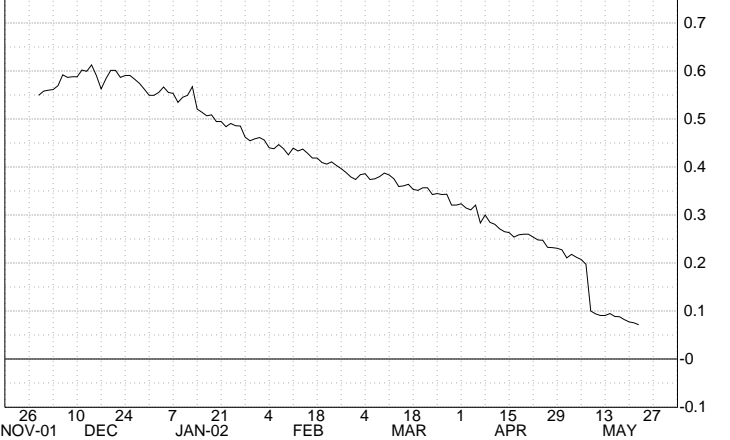
Optima Investment Research  
US 5YR T-NOTE YIELD .. Daily HLC plot



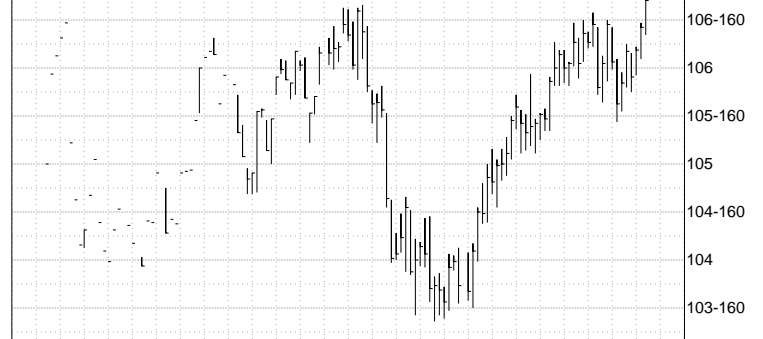
Optima Investment Research  
5YR BASIS [4 3/8% 05/07 - FVM02 \* .9316] .. Daily Close only plot



FVM02 - BENCHMARK YIELD BASIS .. Daily Close only plot



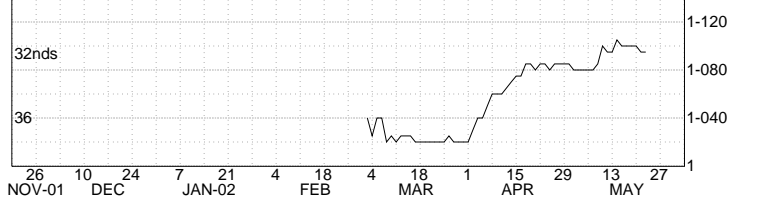
Optima Investment Research  
CBT 5-YEAR T-NOTE JUN 2002 .. Daily HLC plot



CBT 5-YEAR T-NOTE SEP 2002 .. Daily HLC plot



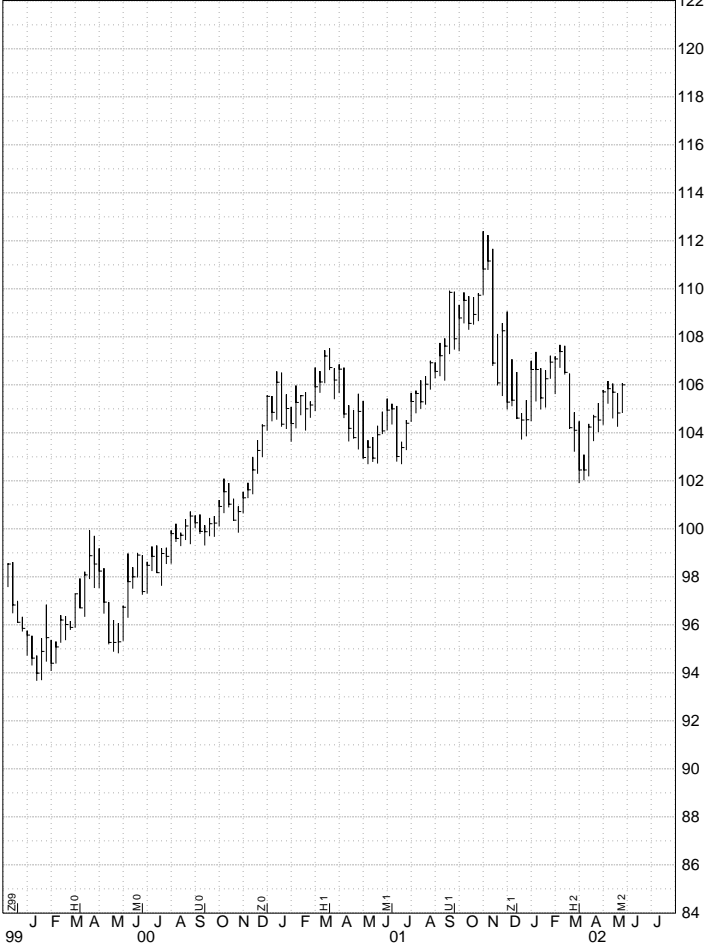
5YR CALENDAR SPRD [FVM02 - FVU02] .. Daily Close only plot



10-YEAR & 5-YEAR NOTES - WEEKLY

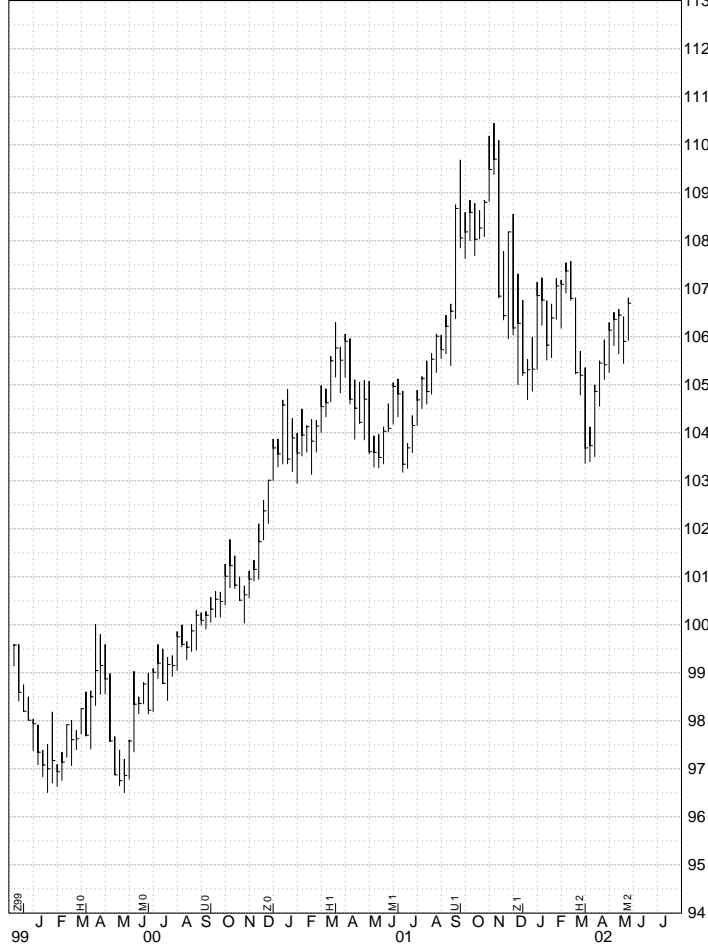
Optima Investment Research

CBOT 10-YR T-NOTES - PITNEAREST FUTURES .. Weekly HLC plot



Optima Investment Research

CBOT 5-YR T-NOTES - PIT NEAREST FUTURES .. Weekly HLC plot



Optima Investment Research

US 10YR T-NOTE YIELD .. Weekly HLC plot



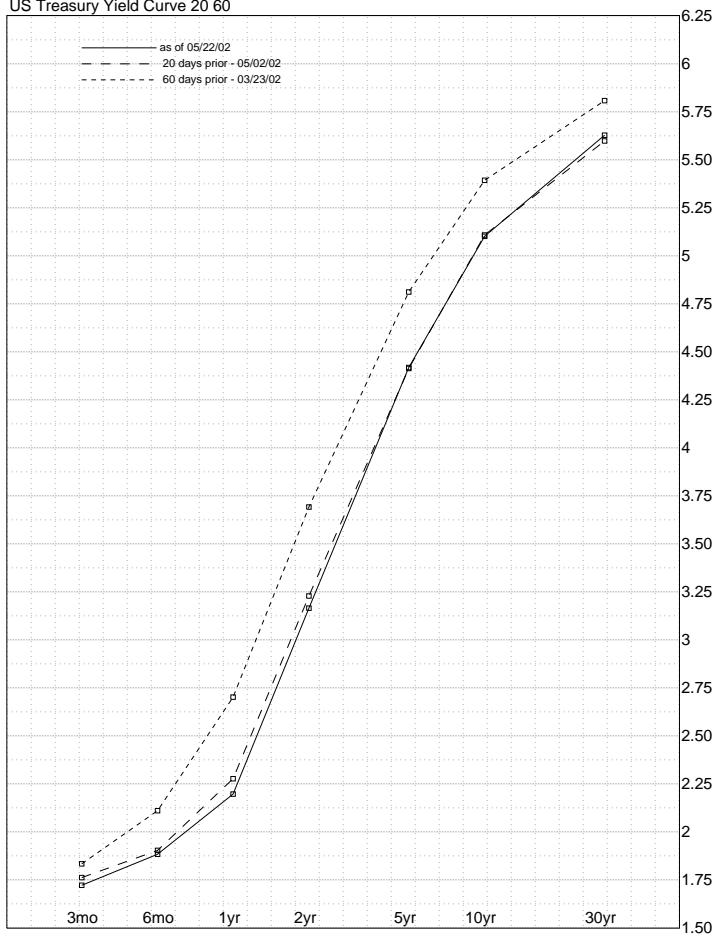
Optima Investment Research

US 5YR T-NOTE YIELD .. Weekly HLC plot

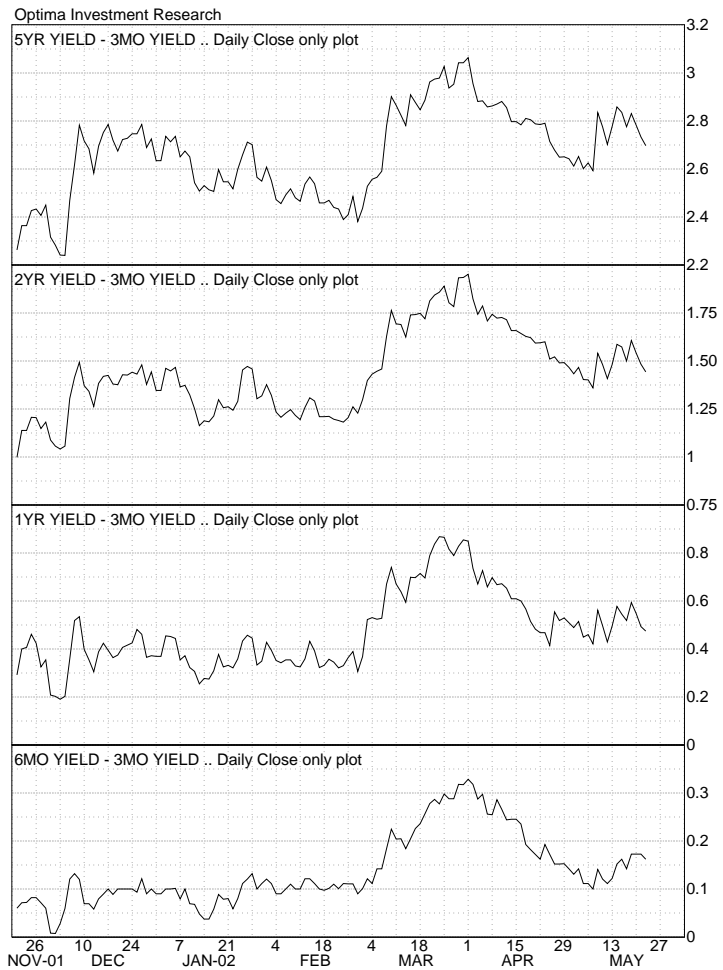


TREASURY YIELD CURVE

Optima Investment Research  
US Treasury Yield Curve 20 60

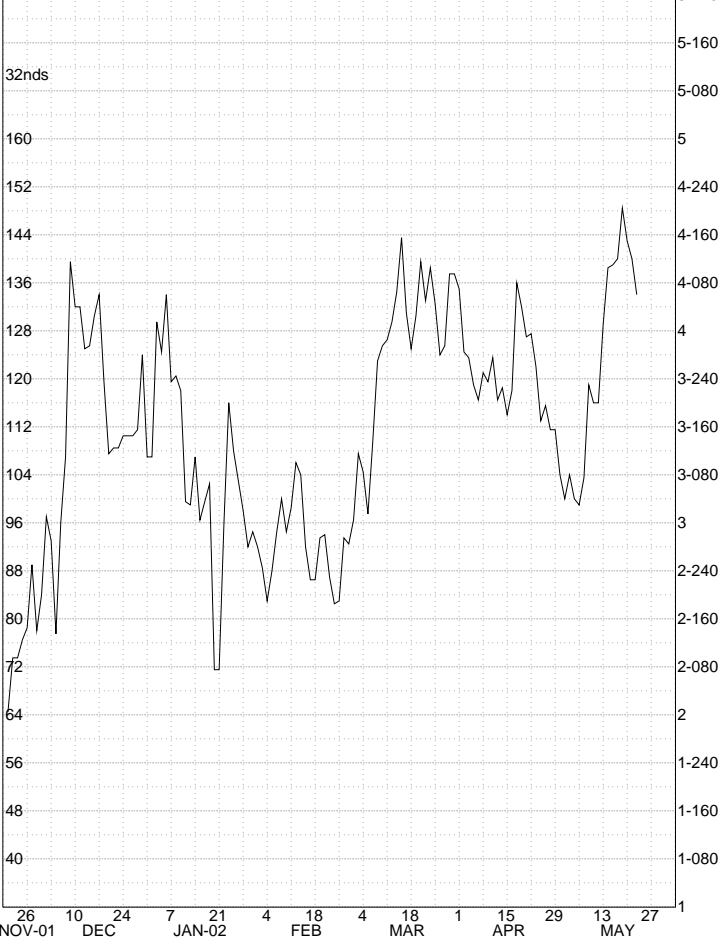


Rising spread = steeper yield curve

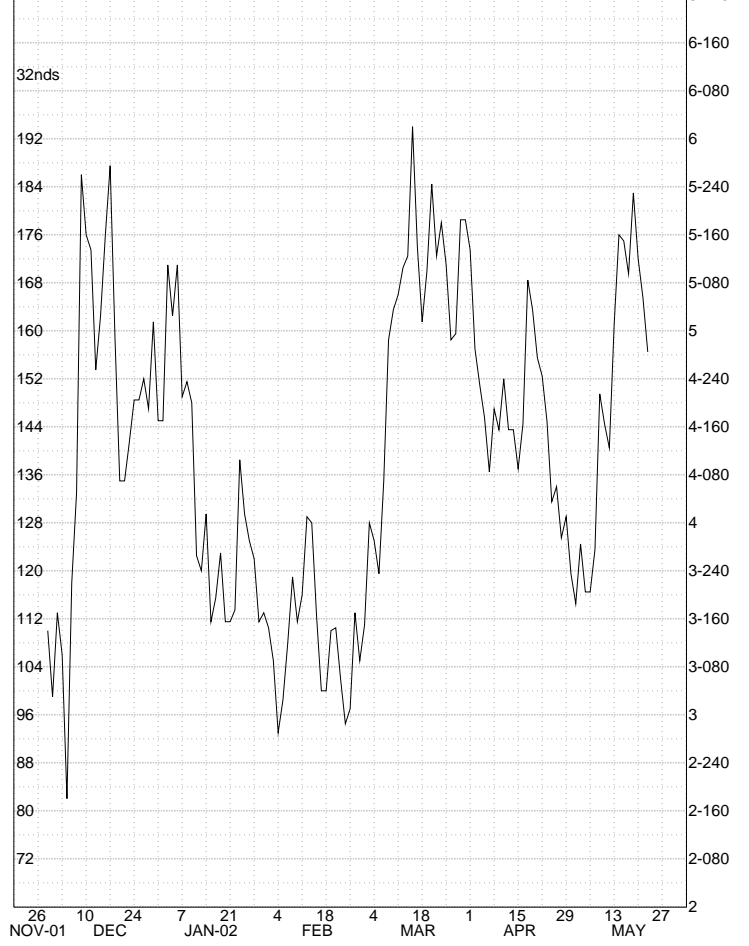


NOB & FOB

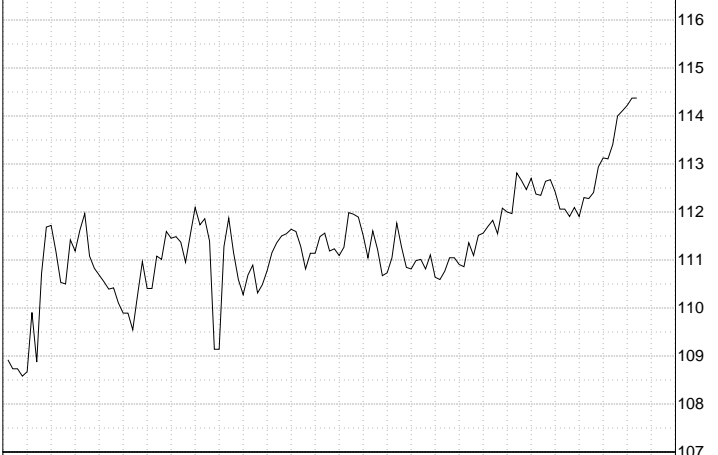
Optima Investment Research  
JUN NOB [TYM02 - USM02] .. Daily Close only plot



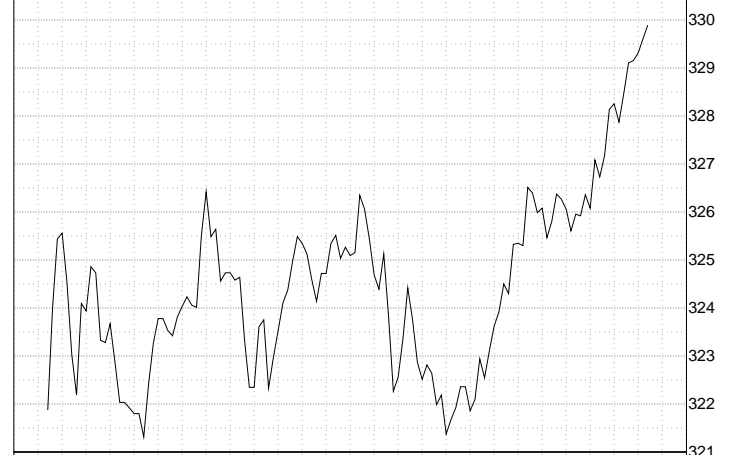
Optima Investment Research  
JUN FOB [FVM02 - USM02] .. Daily Close only plot



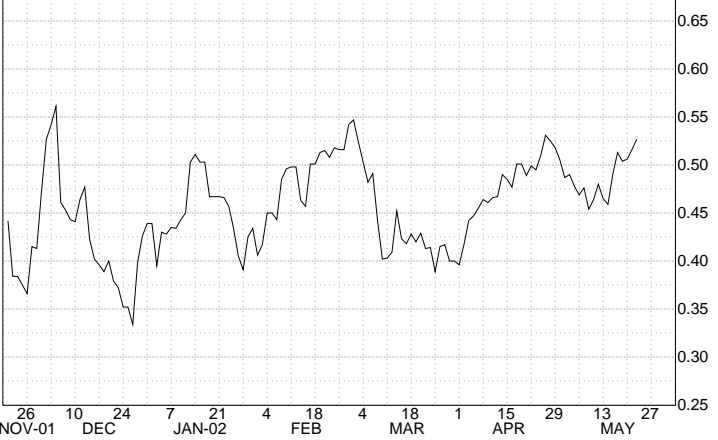
Optima Investment Research  
JUN WEIGHTED NOB [2TYM02 - 2USM02] .. Daily Close only plot



Optima Investment Research  
JUN WEIGHTED FOB [5FVM02 - 2USM02] .. Daily Close only plot



30 YR YIELD - 10YR YIELD .. Daily Close only plot

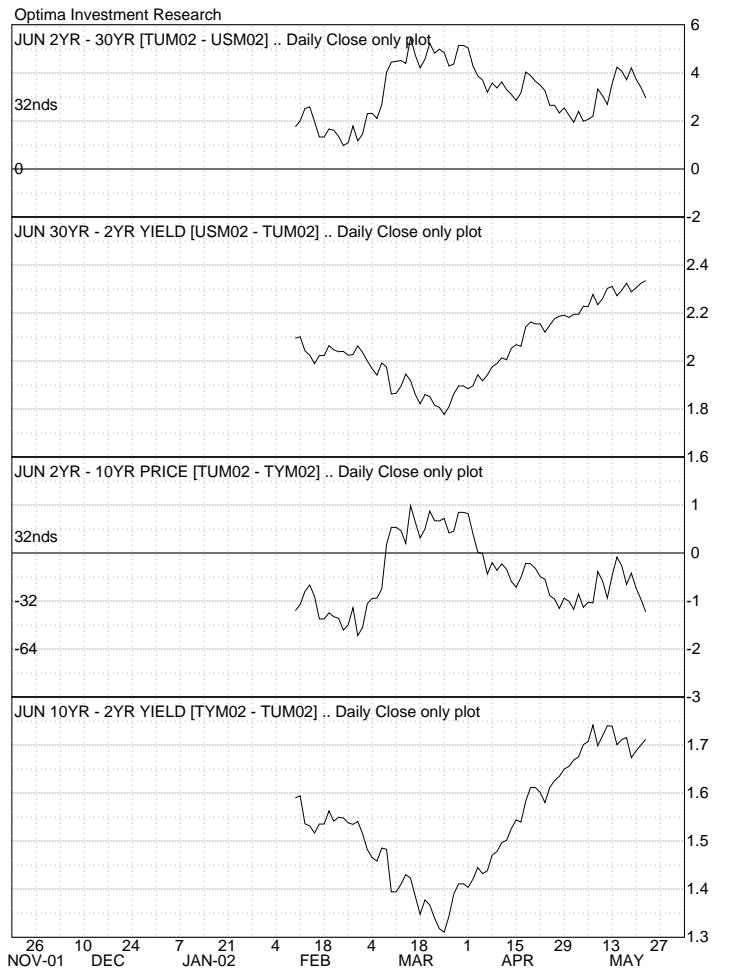


30YR YIELD - 5YR YIELD .. Daily Close only plot



FIT & 2YR SPREADS

Optima Investment Research  
JUN FIT [FVM02 - TYM02] .. Daily Close only plot



Optima Investment Research  
CBT 2-YEAR T-NOTE JUN 2002 .. Daily HLC plot

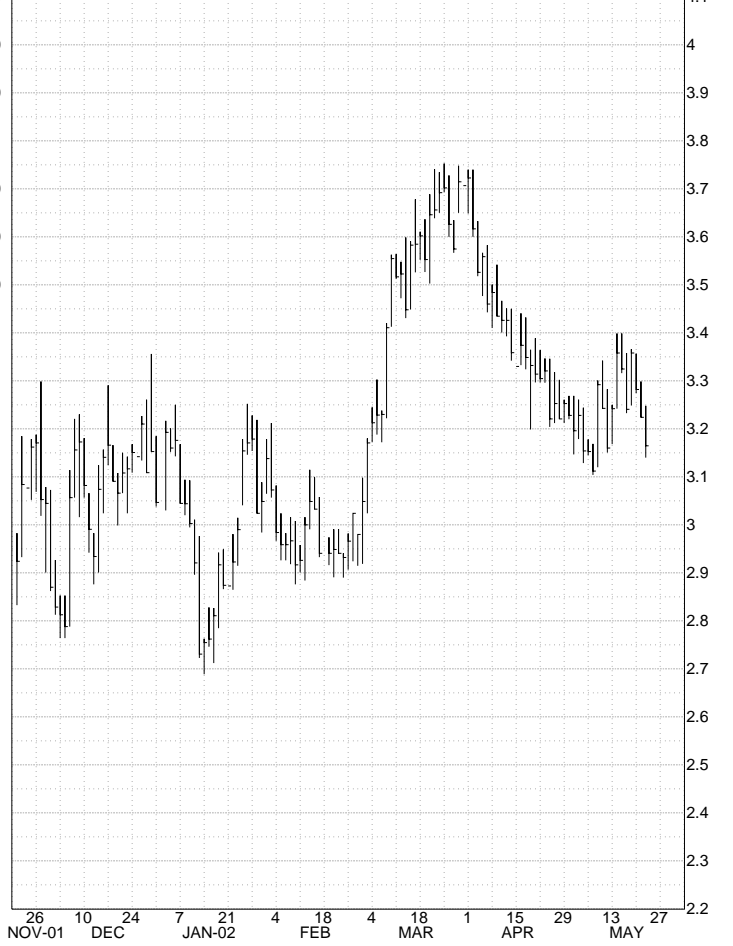


2-YEAR CASH & BASIS / 2-YEAR BACK MONTH

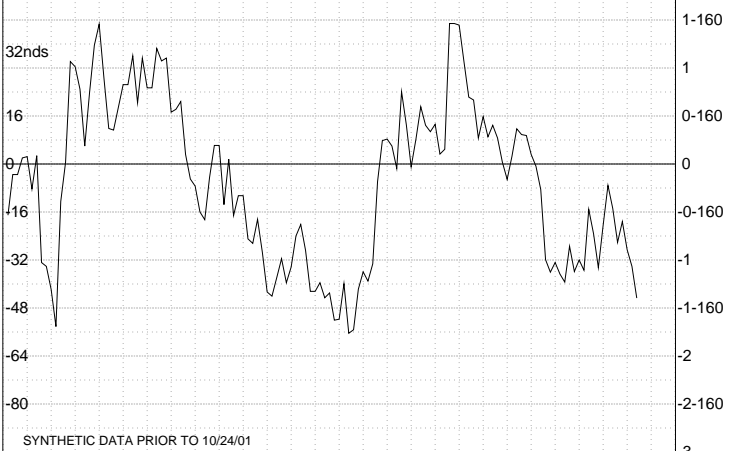
Optima Investment Research  
4.625 2YR 3/04 .. Daily HLC plot



Optima Investment Research  
US 2YR T-NOTE YIELD .. Daily HLC plot



Optima Investment Research  
2YR BASIS [3-0/0% 11/03 - TUM02 \* .9598] .. Daily Close only plot



Optima Investment Research  
CBT 2-YEAR T-NOTE JUN 2002 .. Daily HLC plot

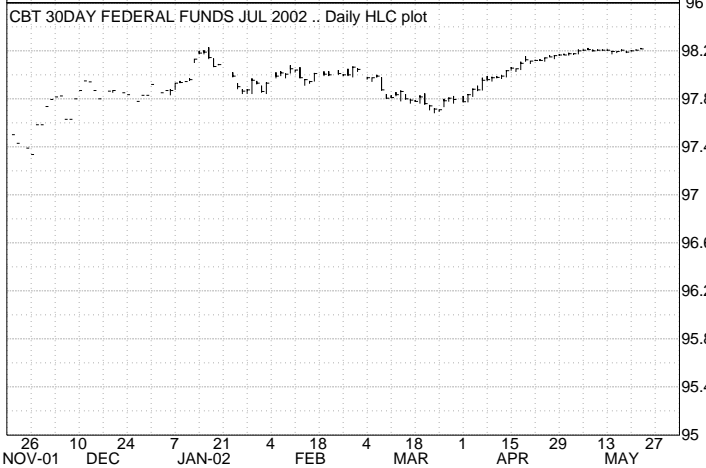
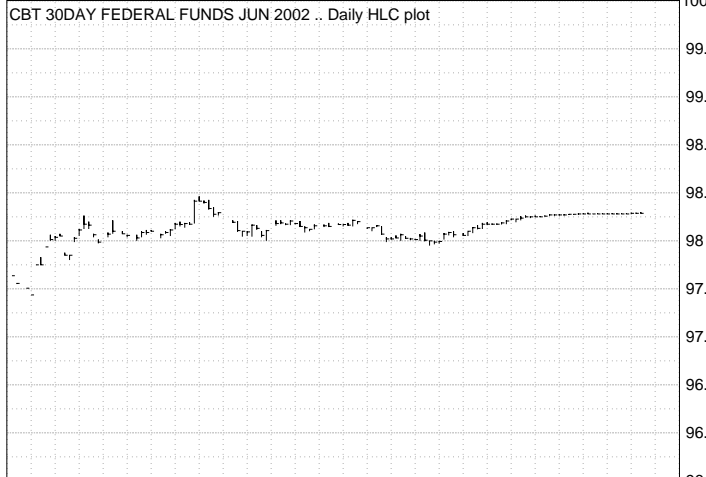


TUM02 - BENCHMARK 2YR YIELD .. Daily Close only plot

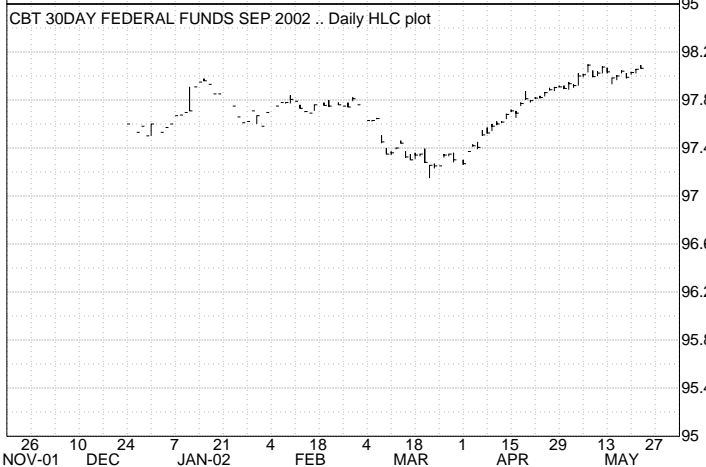
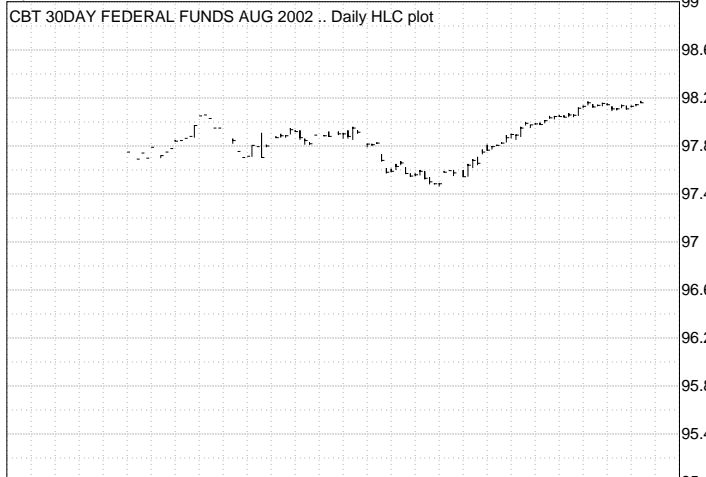


30-DAY INTEREST RATE

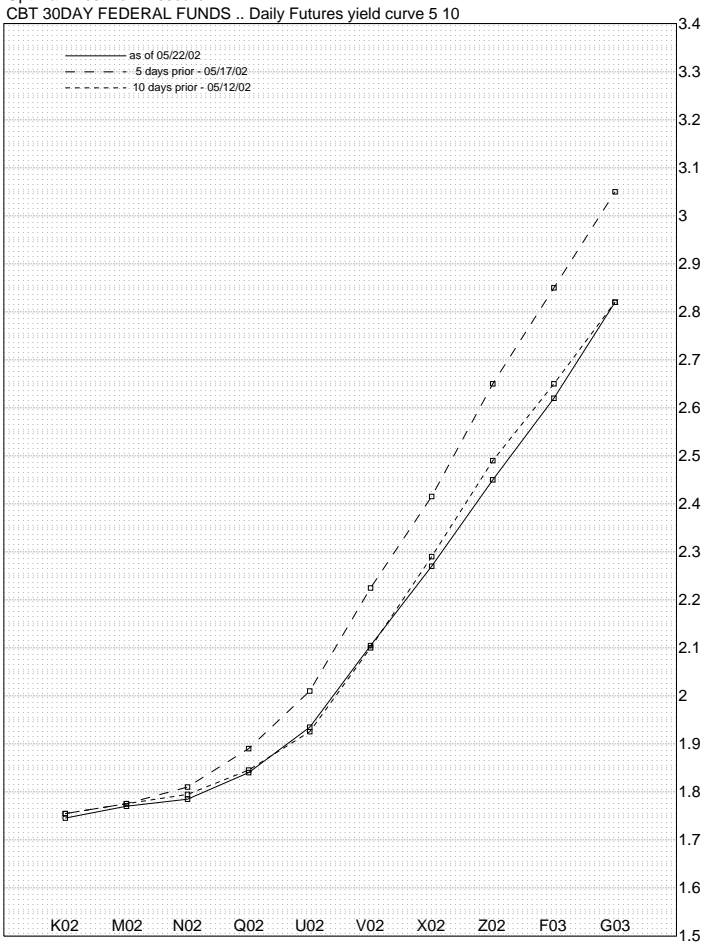
Optima Investment Research



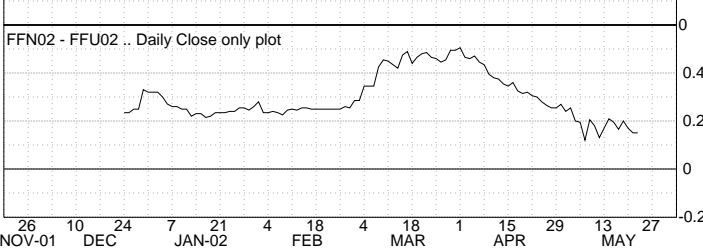
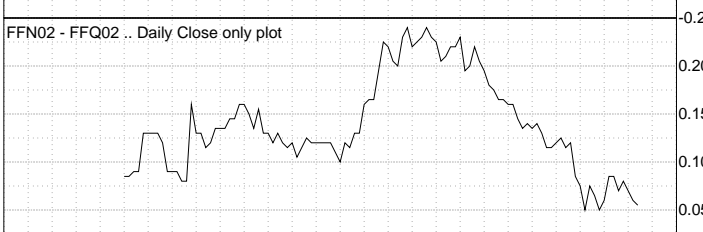
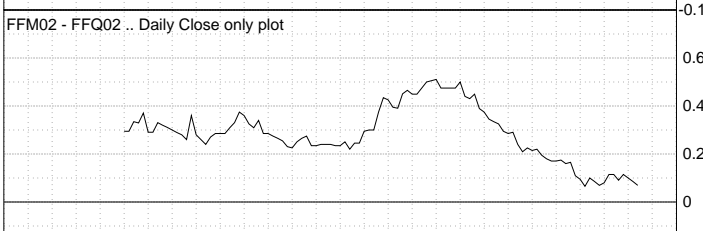
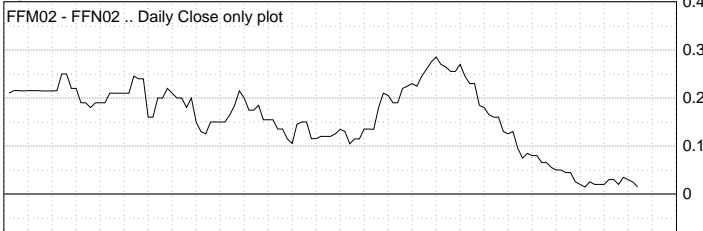
Optima Investment Research



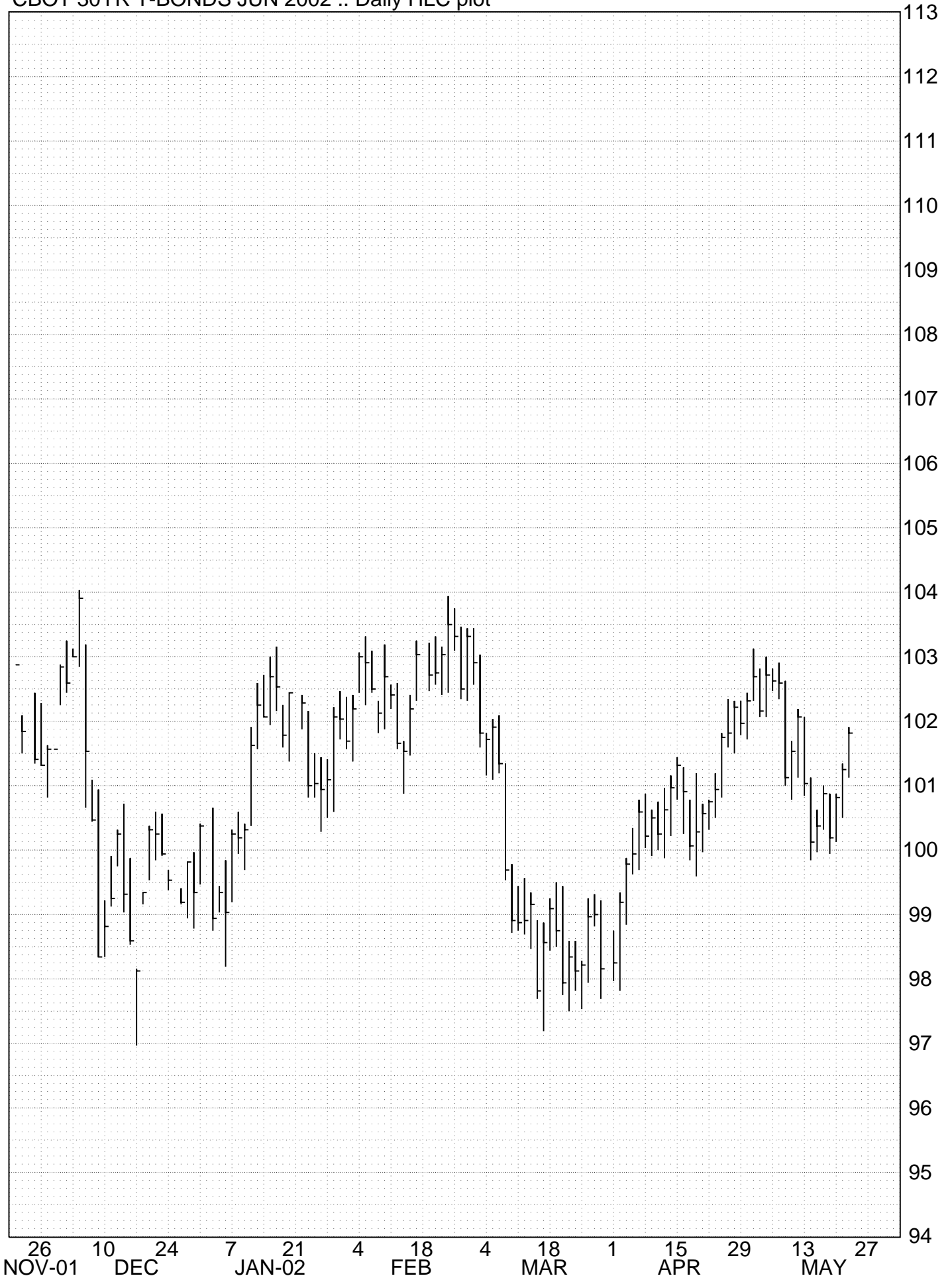
Optima Investment Research



Optima Investment Research



Optima Investment Research  
CBOT 30YR T-BONDS JUN 2002 .. Daily HLC plot



30-YEAR BOND - CASH & FUTURES

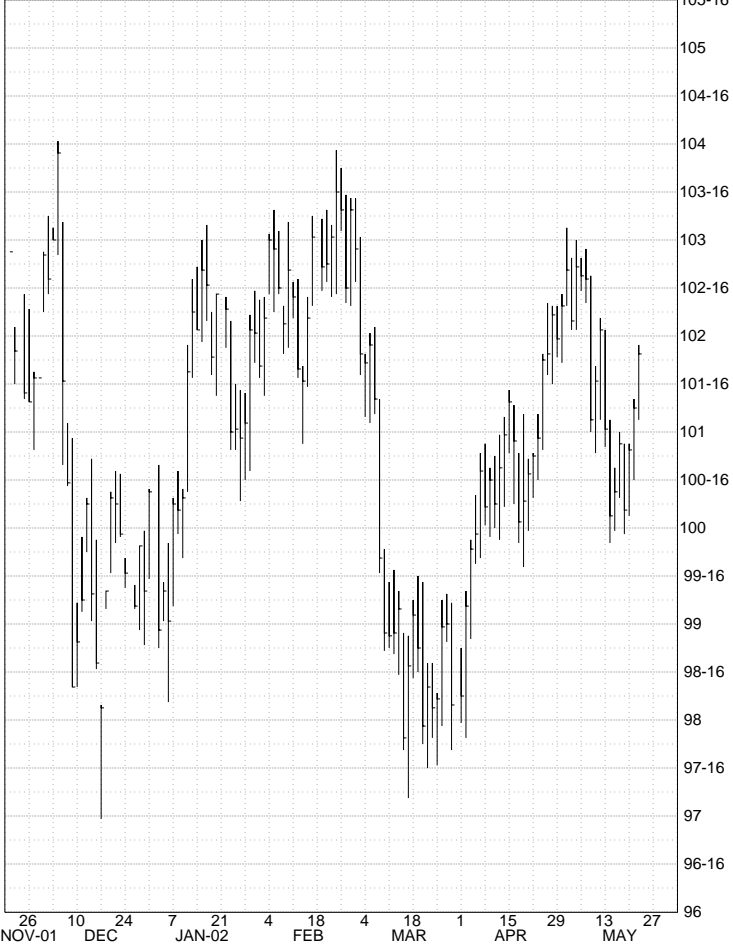
Optima Investment Research  
5-3/8% 30-YR BOND 02/31 .. Daily HLC plot



Optima Investment Research  
US 30YR T-BOND YIELD .. Daily HLC plot



Optima Investment Research  
CBOT 30YR T-BONDS JUN 2002 .. Daily HLC plot

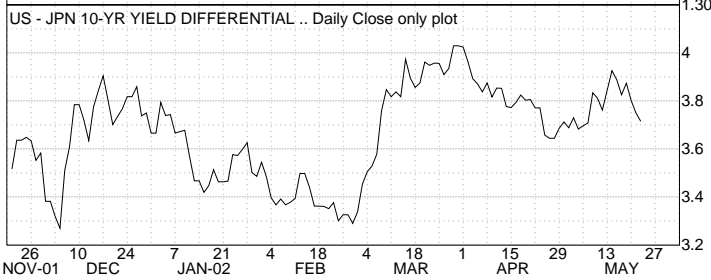
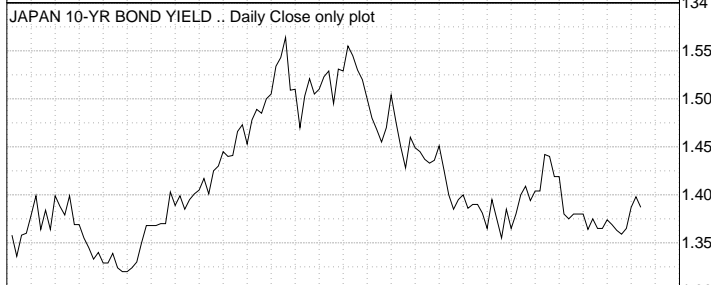


Optima Investment Research  
CBOT 30YR T-BONDS JUN 2002 .. Daily HLC plot

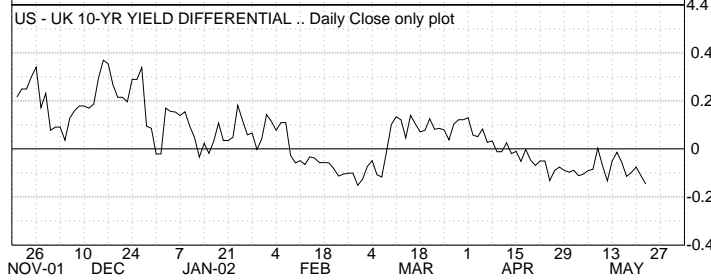
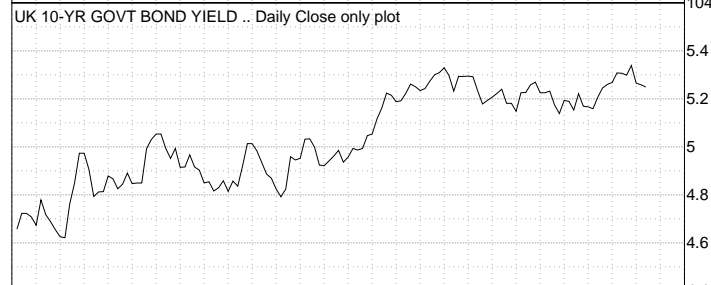


INTERNATIONAL BONDS

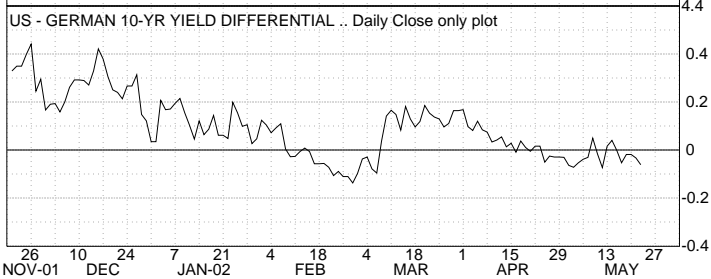
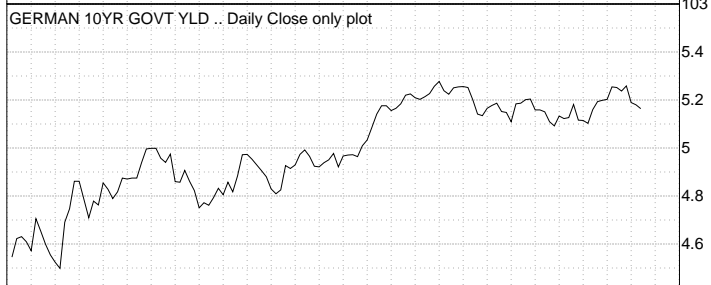
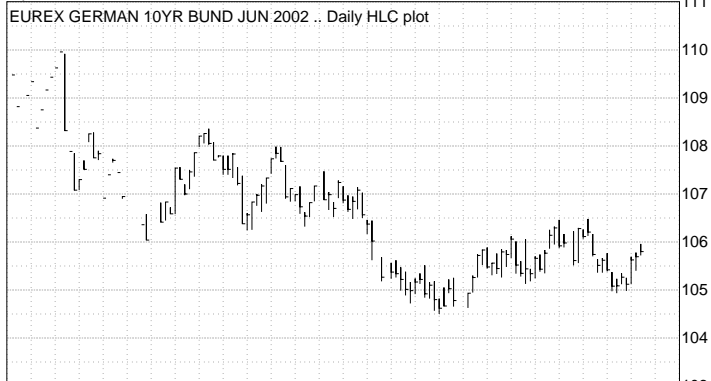
Optima Investment Research



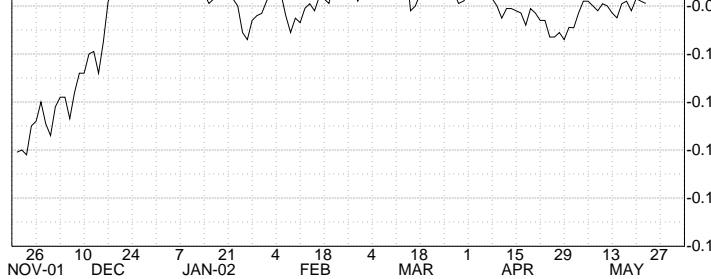
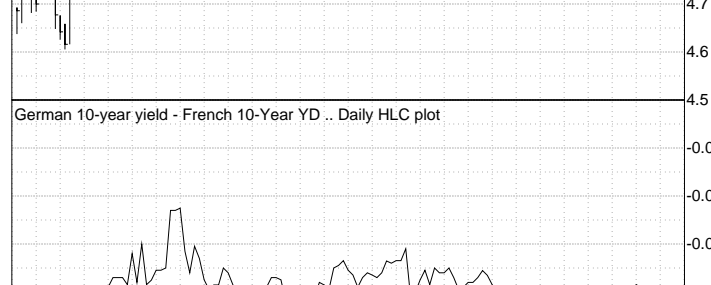
Optima Investment Research



Optima Investment Research



Optima Investment Research



DAILY U.S. MARKET OVERVIEW

Optima Investment Research

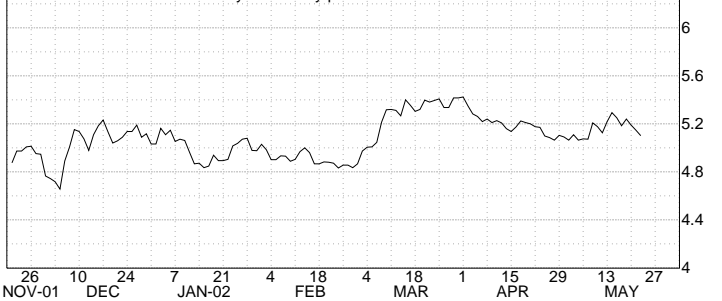
CBT 10-YEAR T-NOTE JUN 2002 .. Daily HLC plot



IMM EURODOLLAR SEP 2002 .. Daily HLC plot



US 10YR T-NOTE YIELD .. Daily Close only plot



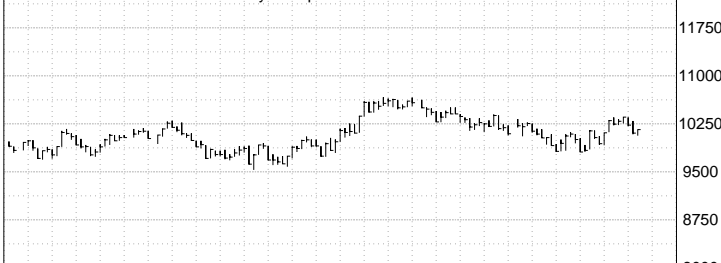
NOV-01 DEC JAN-02 FEB MAR APR MAY 27

Optima Investment Research

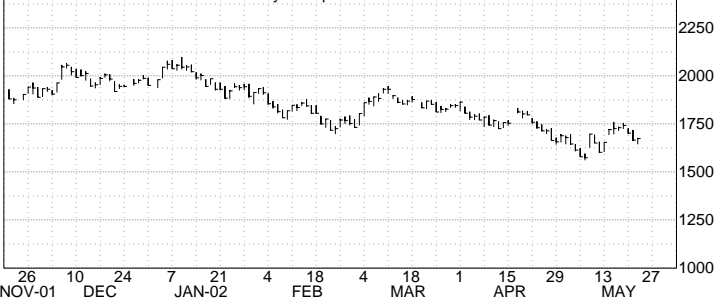
S&P 500 STOCK INDEX .. Daily HLC plot



DOW JONES INDUSTRIALS .. Daily HLC plot



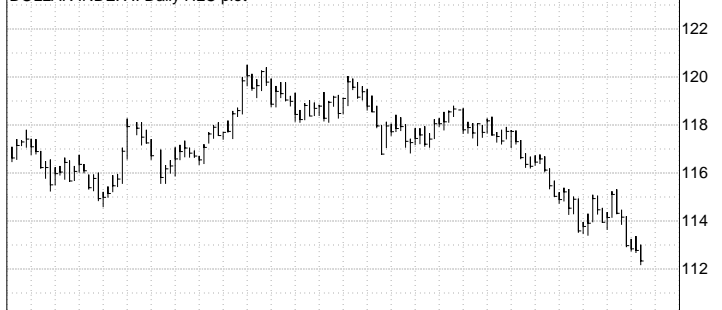
NASDAQ COMPOSITE INDEX .. Daily HLC plot



NOV-01 DEC JAN-02 FEB MAR APR MAY 27

Optima Investment Research

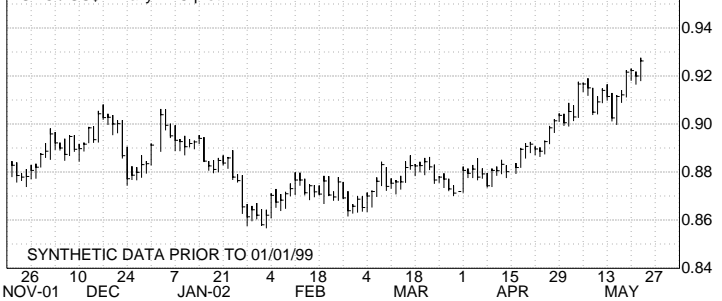
DOLLAR INDEX .. Daily HLC plot



DOLLAR/YEN .. Daily HLC plot



EURO / US\$ .. Daily HLC plot

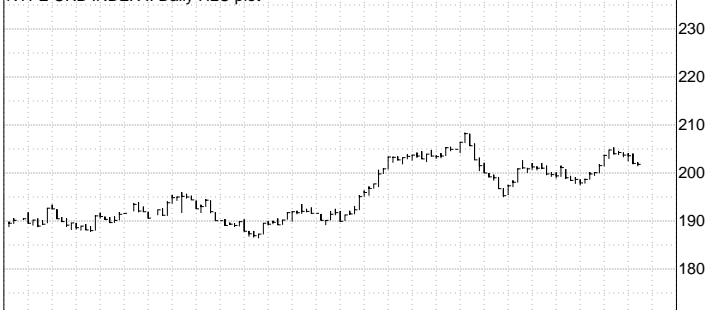


SYNTHETIC DATA PRIOR TO 01/01/99

NOV-01 DEC JAN-02 FEB MAR APR MAY 27

Optima Investment Research

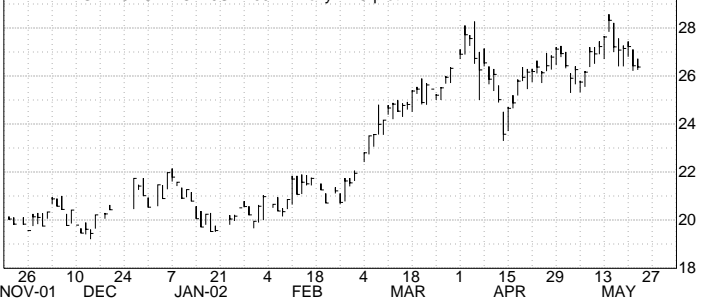
NYFE CRB INDEX .. Daily HLC plot



COMEX GOLD JUN 2002 .. Daily HLC plot



NYMEX LIGHT CRUDE OIL JUL 2002 .. Daily HLC plot



NOV-01 DEC JAN-02 FEB MAR APR MAY 27